



# ABHD4 Polyclonal Antibody

<b>Catalog No</b>	YP-Ab-02456
<b>Isotype</b>	IgG
<b>Reactivity</b>	Human;Mouse
<b>Applications</b>	IHC;IF;ELISA
<b>Gene Name</b>	ABHD4
<b>Protein Name</b>	Abhydrolase domain-containing protein 4
<b>Immunogen</b>	The antiserum was produced against synthesized peptide derived from human ABHD4. AA range:251-300
<b>Specificity</b>	ABHD4 Polyclonal Antibody detects endogenous levels of ABHD4 protein.
<b>Formulation</b>	Liquid in PBS containing 50% glycerol, 0.5% BSA and 0.02% sodium azide.
<b>Source</b>	Polyclonal, Rabbit,IgG
<b>Purification</b>	The antibody was affinity-purified from rabbit antiserum by affinity-chromatography using epitope-specific immunogen.
<b>Dilution</b>	IHC: 1/100 - 1/300. ELISA: 1/20000.. IF 1:50-200
<b>Concentration</b>	1 mg/ml
<b>Purity</b>	≥90%
<b>Storage Stability</b>	-20°C/1 year
<b>Synonyms</b>	ABHD4; Abhydrolase domain-containing protein 4; Alpha/beta-hydrolase 4; Lyso-N-acylphosphatidylethanolamine lipase
<b>Observed Band</b>	
<b>Cell Pathway</b>	endoplasmic reticulum membrane,lipid particle,
<b>Tissue Specificity</b>	Cervix,
<b>Function</b>	caution:Thr-291 is present instead of the conserved His which is expected to be an active site residue.,function:Lysophospholipase selective for N-acyl phosphatidylethanolamine (NAPE). Contributes to the biosynthesis of N-acyl ethanolamines, including the endocannabinoid anandamide by hydrolyzing the sn-1 and sn-2 acyl chains from N-acyl phosphatidylethanolamine (NAPE) generating glycerophospho-N-acyl ethanolamine (GP-NAE), an intermediate for N-acyl ethanolamine biosynthesis. Hydrolyzes substrates bearing saturated, monounsaturated, polyunsaturated N-acyl chains. Shows no significant activity towards other lysophospholipids, including lysophosphatidylcholine, lysophosphatidylethanolamine and lysophosphatidylserine.,similarity:Belongs to the peptidase S33 family. ABHD4/ABHD5 subfamily.,
<b>Background</b>	caution:Thr-291 is present instead of the conserved His which is expected to be an active site residue.,function:Lysophospholipase selective for N-acyl phosphatidylethanolamine (NAPE). Contributes to the biosynthesis of N-acyl



ethanolamines, including the endocannabinoid anandamide by hydrolyzing the sn-1 and sn-2 acyl chains from N-acyl phosphatidylethanolamine (NAPE) generating glycerophospho-N-acyl ethanolamine (GP-NAE), an intermediate for N-acyl ethanolamine biosynthesis. Hydrolyzes substrates bearing saturated, monounsaturated, polyunsaturated N-acyl chains. Shows no significant activity towards other lysophospholipids, including lysophosphatidylcholine, lysophosphatidylethanolamine and lysophosphatidylserine.,similarity:Belongs to the peptidase S33 family. ABHD4/ABHD5 subfamily.,

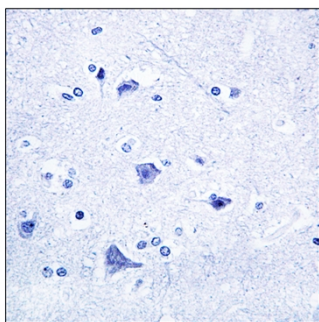
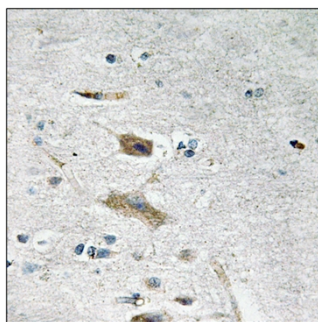
**matters needing attention**

Avoid repeated freezing and thawing!

**Usage suggestions**

This product can be used in immunological reaction related experiments. For more information, please consult technical personnel.

## Products Images



Immunohistochemistry analysis of paraffin-embedded human brain tissue, using ABHD4 Antibody. The picture on the right is blocked with the synthesized peptide.