

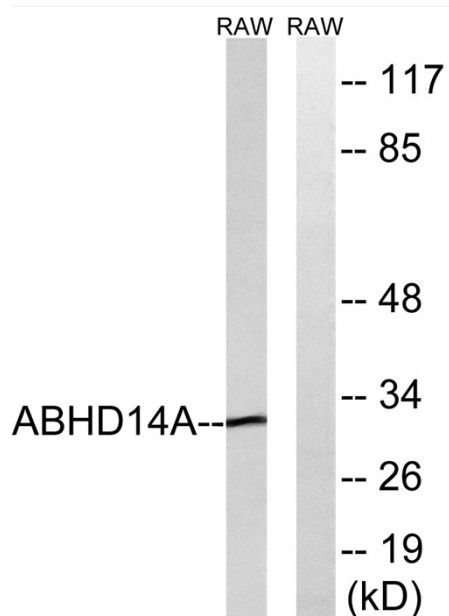


# ABHD14A Polyclonal Antibody

|                                  |   |
|----------------------------------|---|
| <b>Catalog No</b>                | YP-Ab-02453   |
| <b>Isotype</b>                   | IgG   |
| <b>Reactivity</b>                | Human;Mouse;Rat   |
| <b>Applications</b>              | WB;ELISA  |
| <b>Gene Name</b>                 | ABHD14A   |
| <b>Protein Name</b>              | Abhydrolase domain-containing protein 14A   |
| <b>Immunogen</b>                 | The antiserum was produced against synthesized peptide derived from human ABHD14A. AA range:201-250   |
| <b>Specificity</b>               | ABHD14A Polyclonal Antibody detects endogenous levels of ABHD14A protein.   |
| <b>Formulation</b>               | Liquid in PBS containing 50% glycerol, 0.5% BSA and 0.02% sodium azide.   |
| <b>Source</b>                    | Polyclonal, Rabbit,IgG  |
| <b>Purification</b>              | The antibody was affinity-purified from rabbit antiserum by affinity-chromatography using epitope-specific immunogen.   |
| <b>Dilution</b>                  | Western Blot: 1/500 - 1/2000. ELISA: 1/40000. Not yet tested in other applications.   |
| <b>Concentration</b>             | 1 mg/ml   |
| <b>Purity</b>                    | ≥90%  |
| <b>Storage Stability</b>         | -20°C/1 year  |
| <b>Synonyms</b>                  | ABHD14A; Abhydrolase domain-containing protein 14A  |
| <b>Observed Band</b>             | 30kD  |
| <b>Cell Pathway</b>              | Cytoplasm . Membrane ; Single-pass type II membrane protein .   |
| <b>Tissue Specificity</b>        | Brain,Lymph,  |
| <b>Function</b>                  | caution:It is uncertain whether Met-1 or Met-30 is the initiator.,function:Possible role in granule neuron development.,similarity:Belongs to the AB hydrolase superfamily. ABHD14 family., |
| <b>Background</b>                | caution:It is uncertain whether Met-1 or Met-30 is the initiator.,function:Possible role in granule neuron development.,similarity:Belongs to the AB hydrolase superfamily. ABHD14 family., |
| <b>matters needing attention</b> | Avoid repeated freezing and thawing!  |
| <b>Usage suggestions</b>         | This product can be used in immunological reaction related experiments. For more information, please consult technical personnel.   |



## Products Images



Western blot analysis of lysates from RAW264.7 cells, using ABHD14A Antibody. The lane on the right is blocked with the synthesized peptide.