



AASS Polyclonal Antibody

Catalog No	YP-Ab-02449
Isotype	IgG
Reactivity	Human;Rat;Mouse;
Applications	WB;ELISA
Gene Name	AASS
Protein Name	Alpha-aminoadipic semialdehyde synthase mitochondrial
Immunogen	The antiserum was produced against synthesized peptide derived from human AASS. AA range:251-300
Specificity	AASS Polyclonal Antibody detects endogenous levels of AASS protein.
Formulation	Liquid in PBS containing 50% glycerol, 0.5% BSA and 0.02% sodium azide.
Source	Polyclonal, Rabbit,IgG
Purification	The antibody was affinity-purified from rabbit antiserum by affinity-chromatography using epitope-specific immunogen.
Dilution	Western Blot: 1/500 - 1/2000. ELISA: 1/10000. Not yet tested in other applications.
Concentration	1 mg/ml
Purity	≥90%
Storage Stability	-20°C/1 year
Synonyms	AASS; Alpha-aminoadipic semialdehyde synthase; mitochondrial; LKR/SDH
Observed Band	102kD
Cell Pathway	Mitochondrion .
Tissue Specificity	Expressed in all 16 tissues examined with highest expression in the liver.
Function	catalytic activity:N(6)-(L-1,3-dicarboxypropyl)-L-lysine + NAD(+) + H(2)O = L-glutamate + 2-aminoadipate 6-semialdehyde + NADH.,catalytic activity:N(6)-(L-1,3-dicarboxypropyl)-L-lysine + NADP(+) + H(2)O = L-lysine + 2-oxoglutarate + NADPH.,disease:Defects in AASS are the cause of hyperlysinemia [MIM:238700]. Hyperlysinemia is an autosomal recessive condition characterized by hyperlysinemia lysinuria and variable saccharopinuria.,function:Bifunctional enzyme that catalyzes the first two steps in lysine degradation. The N-terminal and the C-terminal contain lysine-ketoglutarate reductase and saccharopine dehydrogenase activity, respectively.,induction:Induced by starvation.,pathway:Amino-acid degradation; L-lysine degradation via saccharopine pathway; glutaryl-CoA from L-lysine: step 1/6.,pathway:Amino-acid degradation; L-lysine degradation via saccharopine pathway; glutaryl-CoA from L-lys



Background

This gene encodes a bifunctional enzyme that catalyzes the first two steps in the mammalian lysine degradation pathway. The N-terminal and the C-terminal portions of this enzyme contain lysine-ketoglutarate reductase and saccharopine dehydrogenase activity, respectively, resulting in the conversion of lysine to alpha-aminoadipic semialdehyde. Mutations in this gene are associated with familial hyperlysinemia. [provided by RefSeq, Jul 2008],

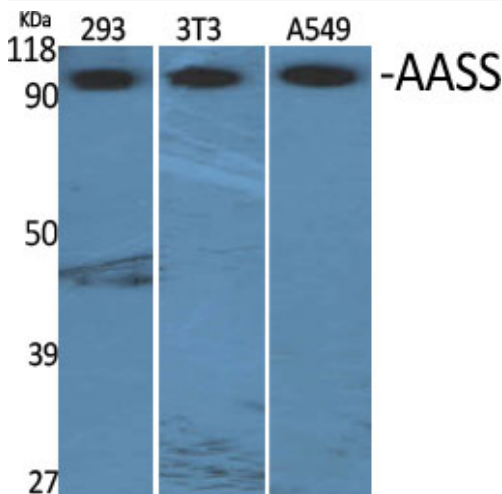
matters needing attention

Avoid repeated freezing and thawing!

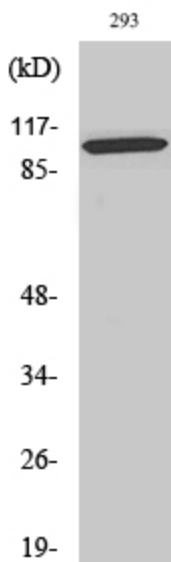
Usage suggestions

This product can be used in immunological reaction related experiments. For more information, please consult technical personnel.

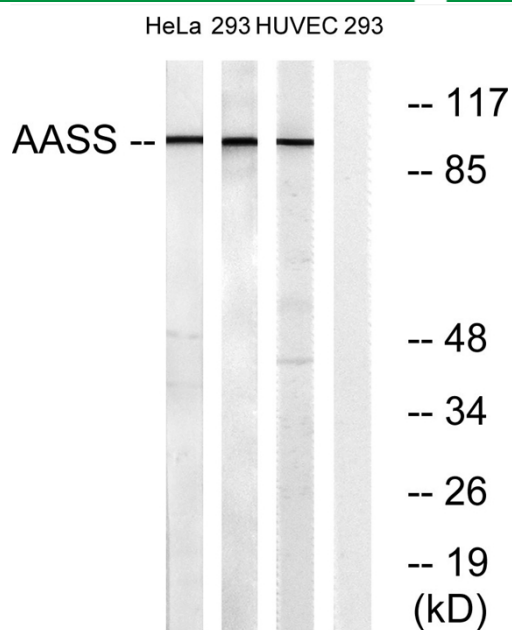
Products Images



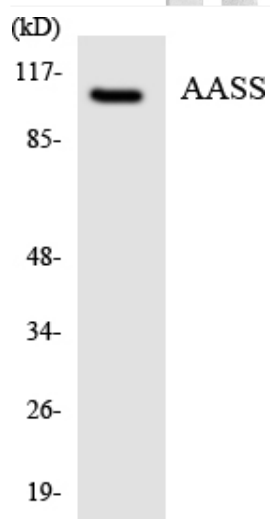
Western Blot analysis of various cells using AASS Polyclonal Antibody



Western Blot analysis of HeLa cells using AASS Polyclonal Antibody



Western blot analysis of lysates from 293, HUVEC, and HeLa cells, using AASS Antibody. The lane on the right is blocked with the synthesized peptide.



Western blot analysis of the lysates from COLO205 cells using AASS antibody.