



# ATG4c Rabbit Polyclonal Antibody

<b>Catalog No</b>	YP-Ab-02384
<b>Isotype</b>	IgG
<b>Reactivity</b>	Human;Mouse;Rat
<b>Applications</b>	IHC;IF
<b>Gene Name</b>	ATG4C APG4C AUTL1 AUTL3
<b>Protein Name</b>	Cysteine protease ATG4C (EC 3.4.22.-) (AUT-like 3 cysteine endopeptidase) (Autophagin-3) (Autophagy-related cysteine endopeptidase 3) (Autophagy-related protein 4 homolog C)
<b>Immunogen</b>	Recombinant Protein of ATG4c
<b>Specificity</b>	The antibody detects endogenous ATG4c protein
<b>Formulation</b>	Liquid in PBS containing 50% glycerol, 0.5% BSA and 0.02% sodium azide.
<b>Source</b>	Polyclonal, Rabbit,IgG
<b>Purification</b>	The antibody was affinity-purified from rabbit antiserum by affinity-chromatography using epitope-specific immunogen.
<b>Dilution</b>	IHC-p 1:50-300. IF 1:50-200
<b>Concentration</b>	1 mg/ml
<b>Purity</b>	≥90%
<b>Storage Stability</b>	-20°C/1 year
<b>Synonyms</b>	Cysteine protease ATG4C (EC 3.4.22.-;AUT-like 3 cysteine endopeptidase;Autophagin-3;Autophagy-related cysteine endopeptidase 3;Autophagy-related protein 4 homolog C)
<b>Observed Band</b>	57kD
<b>Cell Pathway</b>	Cytoplasm .
<b>Tissue Specificity</b>	Brain,Heart,Placenta,Testis,
<b>Function</b>	enzyme regulation:Inhibited by N-ethylmaleimide.,function:Cysteine protease required for autophagy, which cleaves the C-terminal part of either MAP1LC3, GABARAPL2 or GABARAP, allowing the liberation of form I. A subpopulation of form I is subsequently converted to a smaller form (form II). Form II, with a revealed C-terminal glycine, is considered to be the phosphatidylethanolamine (PE)-conjugated form, and has the capacity for the binding to autophagosomes.,similarity:Belongs to the peptidase C54 family.,tissue specificity:Highly expressed in skeletal muscle, heart, liver and testis.,
<b>Background</b>	Autophagy is the process by which endogenous proteins and damaged organelles are destroyed intracellularly. Autophagy is postulated to be essential for cell homeostasis and cell remodeling during differentiation, metamorphosis, non-apoptotic cell death, and aging. Reduced levels of autophagy have been



described in some malignant tumors, and a role for autophagy in controlling the unregulated cell growth linked to cancer has been proposed. This gene encodes a member of the autophagin protein family. The encoded protein is also designated as a member of the C-54 family of cysteine proteases. Alternate transcriptional splice variants, encoding the same protein, have been characterized. [provided by RefSeq, Jul 2008],

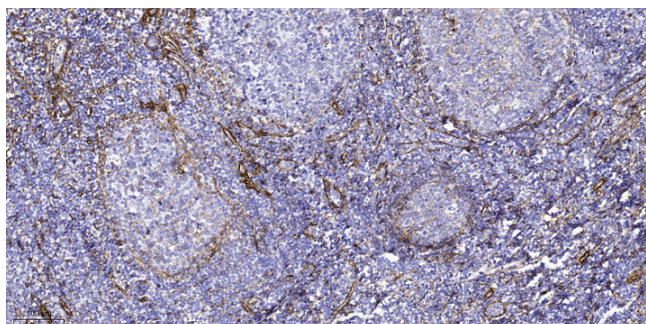
**matters needing attention**

Avoid repeated freezing and thawing!

**Usage suggestions**

This product can be used in immunological reaction related experiments. For more information, please consult technical personnel.

## Products Images



Immunohistochemical analysis of paraffin-embedded human tonsil. 1, Tris-EDTA, pH9.0 was used for antigen retrieval. 2 Antibody was diluted at 1:200 (4° overnight). 3, Secondary antibody was diluted at 1:200 (room temperature, 45min).