



MMP7 (Cleaved-Tyr95) rabbit pAb

| | |
|---------------------------|---|
| Catalog No | YP-Ab-02313 |
| Isotype | IgG |
| Reactivity | Human;Mouse;Rat |
| Applications | WB;ELISA;IHC |
| Gene Name | MMP7 MPSL1 PUMP1 |
| Protein Name | MMP7 (Cleaved-Tyr95) |
| Immunogen | Synthesized peptide derived from human MMP7 (Cleaved-Tyr95) |
| Specificity | This antibody detects endogenous levels of Human,Mouse,Rat MMP7 (Cleaved-Tyr95, protein was cleaved amino acid sequence between 94-95) |
| Formulation | Liquid in PBS containing 50% glycerol, 0.5% BSA and 0.02% sodium azide. |
| Source | Polyclonal, Rabbit,IgG |
| Purification | The antibody was affinity-purified from rabbit serum by affinity-chromatography using specific immunogen. |
| Dilution | WB 1:500-2000;IHC-p 1:50-300; ELISA 2000-20000 |
| Concentration | 1 mg/ml |
| Purity | ≥90% |
| Storage Stability | -20°C/1 year |
| Synonyms | Matrilysin (EC 3.4.24.23;Matrin;Matrix metalloproteinase-7;MMP-7;Pump-1 protease;Uterine metalloproteinase) |
| Observed Band | 19 29kD |
| Cell Pathway | Secreted, extracellular space, extracellular matrix . |
| Tissue Specificity | |
| Function | proteolysis, collagen catabolic process, collagen metabolic process, regulation of cell proliferation, multicellular organismal metabolic process, multicellular organismal catabolic process, multicellular organismal macromolecule metabolic process, |
| Background | catalytic activity: Cleavage of 14-Ala- -Leu-15 and 16-Tyr- -Leu-17 in B chain of insulin. No action on collagen types I, II, IV, V. Cleaves gelatin chain alpha-2(I) > alpha-1(I).,cofactor: Binds 2 calcium ions per subunit.,cofactor: Binds 2 zinc ions per subunit.,domain: The conserved cysteine present in the cysteine-switch motif binds the catalytic zinc ion, thus inhibiting the enzyme. The dissociation of the cysteine from the zinc ion upon the activation-peptide release activates the enzyme.,function: Degrades casein, gelatins of types I, III, IV, and V, and fibronectin. Activates procollagenase.,similarity: Belongs to the peptidase M10A family., |

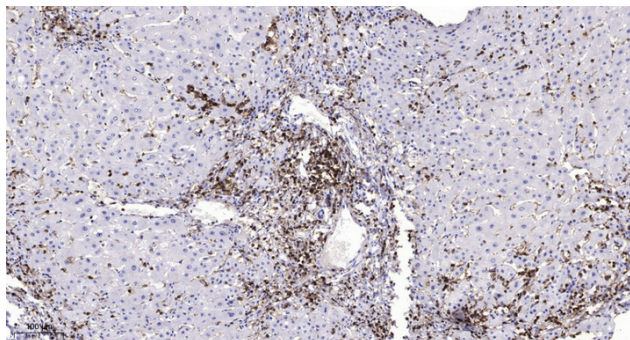
**matters needing attention**

Avoid repeated freezing and thawing!

Usage suggestions

This product can be used in immunological reaction related experiments. For more information, please consult technical personnel.

Products Images



Immunohistochemical analysis of paraffin-embedded human liver cancer. 1, Antibody was diluted at 1:200(4° overnight). 2, Tris-EDTA,pH9.0 was used for antigen retrieval. 3,Secondary antibody was diluted at 1:200(room temperature, 45min).