



# PPGB (20k, Cleaved-Met327) rabbit pAb

<b>Catalog No</b>	YP-Ab-02309
<b>Isotype</b>	IgG
<b>Reactivity</b>	Human;Mouse
<b>Applications</b>	WB;IHC
<b>Gene Name</b>	CTSA PPGB
<b>Protein Name</b>	PPGB (20k, Cleaved-Met327)
<b>Immunogen</b>	Synthesized peptide derived from human PPGB (20k, Cleaved-Met327)
<b>Specificity</b>	This antibody detects endogenous levels of Human,Mouse PPGB (20k, Cleaved-Met327, protein was cleaved amino acid sequence between 326-327 )
<b>Formulation</b>	Liquid in PBS containing 50% glycerol, 0.5% BSA and 0.02% sodium azide.
<b>Source</b>	Polyclonal, Rabbit,IgG
<b>Purification</b>	The antibody was affinity-purified from rabbit serum by affinity-chromatography using specific immunogen.
<b>Dilution</b>	WB 1:500-2000;IHC-p 1:50-300
<b>Concentration</b>	1 mg/ml
<b>Purity</b>	≥90%
<b>Storage Stability</b>	-20°C/1 year
<b>Synonyms</b>	Lysosomal protective protein (EC 3.4.16.5;Carboxypeptidase C;Carboxypeptidase L;Cathepsin A;Protective protein cathepsin A;PPCA;Protective protein for beta-galactosidase) [Cleaved into: Lysosomal protective protein 32 kDa chain; Lysosomal protective protein 20 kDa chain]
<b>Observed Band</b>	20 52kD
<b>Cell Pathway</b>	Lysosome.
<b>Tissue Specificity</b>	
<b>Function</b>	proteolysis, intracellular protein transport, protein localization, protein transport, cellular protein localization,establishment of protein localization, intracellular transport, cellular macromolecule localization,
<b>Background</b>	catalytic activity:Release of a C-terminal amino acid with broad specificity.,disease:Defects in CTSA are the cause of galactosialidosis [MIM:256540]. It is an autosomal recessive disease.,function:Protective protein appears to be essential for both the activity of beta-galactosidase and neuraminidase, it associates with these enzymes and exerts a protective function necessary for their stability and activity. This protein is also a carboxypeptidase and can deamidate tachykinins.,similarity:Belongs to the peptidase S10 family.,subunit:Heterodimer of a 32 kDa chain and a 20 kDa chain;

disulfide-linked.,

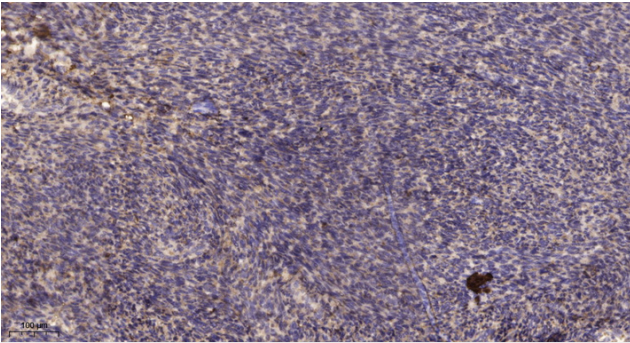
**matters needing attention**

Avoid repeated freezing and thawing!

**Usage suggestions**

This product can be used in immunological reaction related experiments. For more information, please consult technical personnel.

## Products Images



Immunohistochemical analysis of paraffin-embedded human uterus. 1, Antibody was diluted at 1:200(4° overnight). 2, Tris-EDTA,pH9.0 was used for antigen retrieval. 3,Secondary antibody was diluted at 1:200(room temperature, 45min).