



# Cleaved-MMP-23 (Y79) Polyclonal Antibody

<b>Catalog No</b>	YP-Ab-02295
<b>Isotype</b>	IgG
<b>Reactivity</b>	Human;Mouse;Rat
<b>Applications</b>	WB;ELISA
<b>Gene Name</b>	MMP23A
<b>Protein Name</b>	Matrix metalloproteinase-23
<b>Immunogen</b>	The antiserum was produced against synthesized peptide derived from human MMP23. AA range:60-109
<b>Specificity</b>	Cleaved-MMP-23 (Y79) Polyclonal Antibody detects endogenous levels of fragment of activated MMP-23 protein resulting from cleavage adjacent to Y79.
<b>Formulation</b>	Liquid in PBS containing 50% glycerol, 0.5% BSA and 0.02% sodium azide.
<b>Source</b>	Polyclonal, Rabbit,IgG
<b>Purification</b>	The antibody was affinity-purified from rabbit antiserum by affinity-chromatography using epitope-specific immunogen.
<b>Dilution</b>	Western Blot: 1/500 - 1/2000. ELISA: 1/20000. Not yet tested in other applications.
<b>Concentration</b>	1 mg/ml
<b>Purity</b>	≥90%
<b>Storage Stability</b>	-20°C/1 year
<b>Synonyms</b>	MMP23A; MMP21; MMP23B; MMP21; MMP22; Matrix metalloproteinase-23; MMP-23; Femalysin; MIFR-1; Matrix metalloproteinase-21; MMP-21; Matrix metalloproteinase-22; MMP-22
<b>Observed Band</b>	36kD
<b>Cell Pathway</b>	Endoplasmic reticulum membrane ; Single-pass type II membrane protein . Membrane ; Single-pass type II membrane protein . A secreted form produced by proteolytic cleavage may also exist. .
<b>Tissue Specificity</b>	Predominantly expressed in ovary, testis and prostate.
<b>Function</b>	cofactor: Binds 1 zinc ion per subunit.,enzyme regulation: Inhibited by TIMP2.,function: Protease.,PTM: N-glycosylated.,PTM: Proteolytic cleavage might yield an active form.,similarity: Belongs to the peptidase M10A family.,similarity: Contains 1 Ig-like C2-type (immunoglobulin-like) domain.,subcellular location: A secreted form produced by proteolytic cleavage seems also to exist.,tissue specificity: Predominantly expressed in ovary, testis and prostate.,
<b>Background</b>	This gene (MMP23B) encodes a member of the matrix metalloproteinase (MMP) family, and it is part of a duplicated region of chromosome 1p36.3. Proteins of the matrix metalloproteinase (MMP) family are involved in the breakdown of



extracellular matrix in normal physiological processes, such as embryonic development, reproduction, and tissue remodeling, as well as in disease processes, such as arthritis and metastasis. This gene belongs to the more telomeric copy of the duplicated region. [provided by RefSeq, Jul 2008],

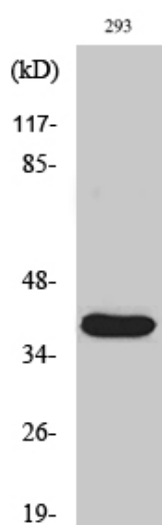
**matters needing attention**

Avoid repeated freezing and thawing!

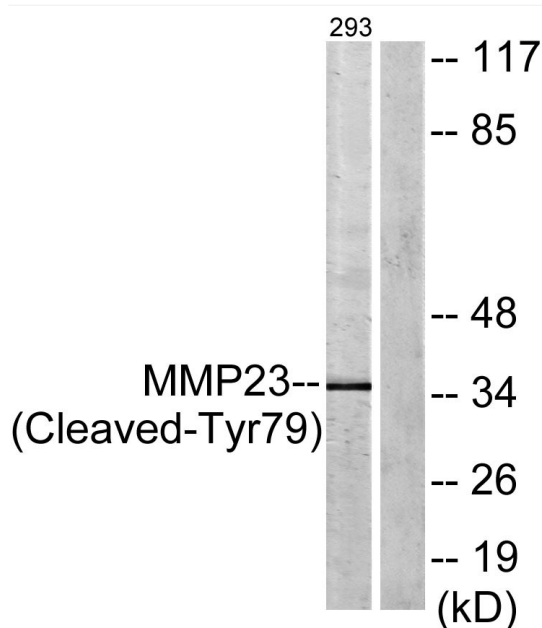
**Usage suggestions**

This product can be used in immunological reaction related experiments. For more information, please consult technical personnel.

**Products Images**



Western Blot analysis of various cells using Cleaved-MMP-23 (Y79) Polyclonal Antibody



Western blot analysis of lysates from 293 cells, treated with etoposide 25uM 1h, using MMP23 (Cleaved-Tyr79) Antibody. The lane on the right is blocked with the synthesized peptide.