



Cleaved-MMP-10 (F99) Polyclonal Antibody

Catalog No	YP-Ab-02290
Isotype	IgG
Reactivity	Human;Rat;Mouse;
Applications	WB;ELISA
Gene Name	MMP10
Protein Name	Stromelysin-2
Immunogen	The antiserum was produced against synthesized peptide derived from human MMP10. AA range:80-129
Specificity	Cleaved-MMP-10 (F99) Polyclonal Antibody detects endogenous levels of fragment of activated MMP-10 protein resulting from cleavage adjacent to F99.
Formulation	Liquid in PBS containing 50% glycerol, 0.5% BSA and 0.02% sodium azide.
Source	Polyclonal, Rabbit,IgG
Purification	The antibody was affinity-purified from rabbit antiserum by affinity-chromatography using epitope-specific immunogen.
Dilution	Western Blot: 1/500 - 1/2000. ELISA: 1/40000. Not yet tested in other applications.
Concentration	1 mg/ml
Purity	≥90%
Storage Stability	-20°C/1 year
Synonyms	MMP10; STMY2; Stromelysin-2; SL-2; Matrix metalloproteinase-10; MMP-10; Transin-2
Observed Band	43kD
Cell Pathway	Secreted, extracellular space, extracellular matrix .
Tissue Specificity	Coronary artery,Ovary,
Function	catalytic activity:Similar to stromelysin 1, but action on collagen types III, IV and V is weak.,cofactor:Binds 2 zinc ions per subunit.,cofactor:Calcium.,domain:The conserved cysteine present in the cysteine-switch motif binds the catalytic zinc ion, thus inhibiting the enzyme. The dissociation of the cysteine from the zinc ion upon the activation-peptide release activates the enzyme.,function:Can degrade fibronectin, gelatins of type I, III, IV, and V; weakly collagens III, IV, and V. Activates procollagenase.,similarity:Belongs to the peptidase M10A family.,similarity:Contains 4 hemopexin-like domains.,
Background	This gene encodes a member of the peptidase M10 family of matrix metalloproteinases (MMPs). Proteins in this family are involved in the breakdown of extracellular matrix in normal physiological processes, such as embryonic development, reproduction, and tissue remodeling, as well as in disease processes, such as arthritis and metastasis. The encoded preproprotein is



proteolytically processed to generate the mature protease. This secreted protease breaks down fibronectin, laminin, elastin, proteoglycan core protein, gelatins, and several types of collagen. The gene is part of a cluster of MMP genes on chromosome 11. [provided by RefSeq, Jan 2016],

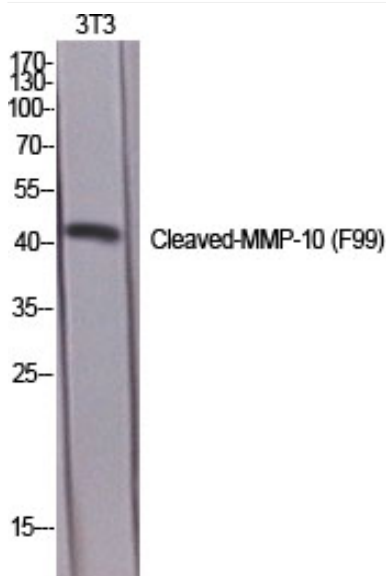
matters needing attention

Avoid repeated freezing and thawing!

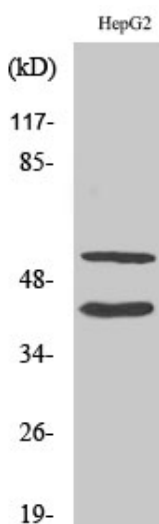
Usage suggestions

This product can be used in immunological reaction related experiments. For more information, please consult technical personnel.

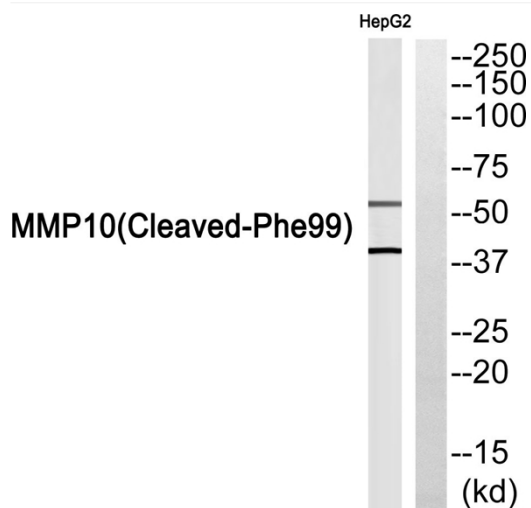
Products Images



Western Blot analysis of various cells using Cleaved-MMP-10 (F99) Polyclonal Antibody diluted at 1:1000



Western Blot analysis of HepG2 cells using Cleaved-MMP-10 (F99) Polyclonal Antibody diluted at 1:1000



Western blot analysis of MMP10 (Cleaved-Phe99) Antibody. The lane on the right is blocked with the MMP10 (Cleaved-Phe99) peptide.