



# Cleaved-Cathepsin Z (L62) Polyclonal Antibody

<b>Catalog No</b>	YP-Ab-02287
<b>Isotype</b>	IgG
<b>Reactivity</b>	Human;Monkey
<b>Applications</b>	WB;ELISA
<b>Gene Name</b>	CTSZ
<b>Protein Name</b>	Cathepsin Z
<b>Immunogen</b>	The antiserum was produced against synthesized peptide derived from human CATZ. AA range:43-92
<b>Specificity</b>	Cleaved-Cathepsin Z (L62) Polyclonal Antibody detects endogenous levels of fragment of activated Cathepsin Z protein resulting from cleavage adjacent to L62.
<b>Formulation</b>	Liquid in PBS containing 50% glycerol, 0.5% BSA and 0.02% sodium azide.
<b>Source</b>	Polyclonal, Rabbit,IgG
<b>Purification</b>	The antibody was affinity-purified from rabbit antiserum by affinity-chromatography using epitope-specific immunogen.
<b>Dilution</b>	Western Blot: 1/500 - 1/2000. ELISA: 1/5000. Not yet tested in other applications.
<b>Concentration</b>	1 mg/ml
<b>Purity</b>	≥90%
<b>Storage Stability</b>	-20°C/1 year
<b>Synonyms</b>	CTSZ; Cathepsin Z; Cathepsin P; Cathepsin X
<b>Observed Band</b>	27kD
<b>Cell Pathway</b>	Lysosome.
<b>Tissue Specificity</b>	Widely expressed.
<b>Function</b>	catalytic activity:Release of C-terminal amino acid residues with broad specificity, but lacks action on C-terminal proline. Shows weak endopeptidase activity.,function:Exhibits carboxy-monopeptidase as well as carboxy-dipeptidase activity.,similarity:Belongs to the peptidase C1 family.,tissue specificity:Widely expressed.,
<b>Background</b>	The protein encoded by this gene is a lysosomal cysteine proteinase and member of the peptidase C1 family. It exhibits both carboxy-monopeptidase and carboxy-dipeptidase activities. The encoded protein has also been known as cathepsin X and cathepsin P. This gene is expressed ubiquitously in cancer cell lines and primary tumors and, like other members of this family, may be involved in tumorigenesis. [provided by RefSeq, Oct 2008],



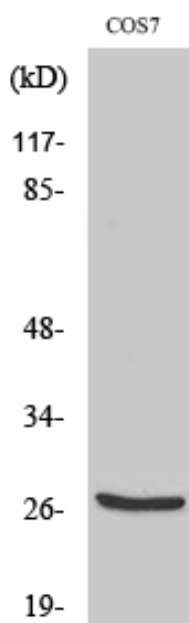
**matters needing attention**

Avoid repeated freezing and thawing!

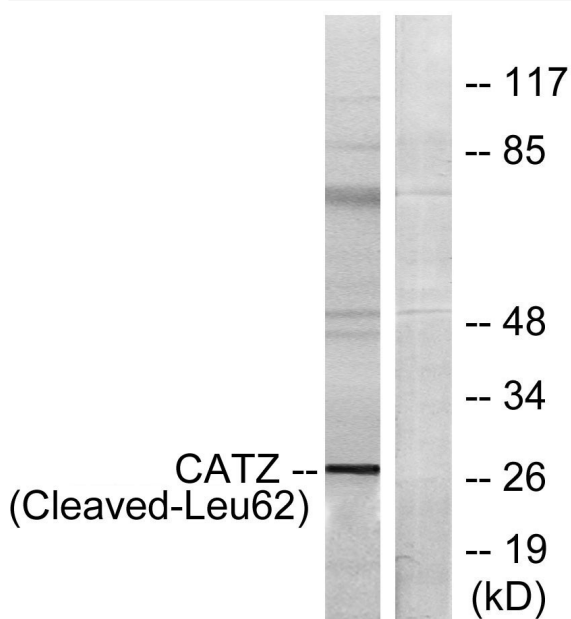
**Usage suggestions**

This product can be used in immunological reaction related experiments. For more information, please consult technical personnel.

**Products Images**



Western Blot analysis of various cells using Cleaved-Cathepsin Z (L62) Polyclonal Antibody



Western blot analysis of lysates from COS7 cells, treated with etoposide 25uM 1h, using CATZ (Cleaved-Leu62) Antibody. The lane on the right is blocked with the synthesized peptide.