



Cleaved-Cathepsin L2 (L114) Polyclonal Antibody

Catalog No	YP-Ab-02286
Isotype	IgG
Reactivity	Human;Monkey
Applications	WB;ELISA
Gene Name	CTSL2
Protein Name	Cathepsin L2
Immunogen	The antiserum was produced against synthesized peptide derived from human CATL2. AA range:95-144
Specificity	Cleaved-Cathepsin L2 (L114) Polyclonal Antibody detects endogenous levels of fragment of activated Cathepsin L2 protein resulting from cleavage adjacent to L114.
Formulation	Liquid in PBS containing 50% glycerol, 0.5% BSA and 0.02% sodium azide.
Source	Polyclonal, Rabbit,IgG
Purification	The antibody was affinity-purified from rabbit antiserum by affinity-chromatography using epitope-specific immunogen.
Dilution	Western Blot: 1/500 - 1/2000. ELISA: 1/20000. Not yet tested in other applications.
Concentration	1 mg/ml
Purity	≥90%
Storage Stability	-20°C/1 year
Synonyms	CTSL2; CATL2; CTSU; CTSV; Cathepsin L2; Cathepsin U; Cathepsin V
Observed Band	37kD
Cell Pathway	Lysosome .
Tissue Specificity	Predominantly expressed in the thymus and testis. Also expressed in corneal epithelium, and to a lesser extent in conjunctival epithelium and skin.
Function	catalytic activity:The recombinant enzyme hydrolyzes proteins (serum albumin, collagen) and synthetic substrates (Z-Phe-Arg-NHMec > Z-Leu-Arg-NHMec > Z-Val-Arg-NHMec).,function:Cysteine protease. May have an important role in corneal physiology.,similarity:Belongs to the peptidase C1 family.,tissue specificity:Predominantly expressed in the thymus and testis. Also expressed in corneal epithelium, and to a lesser extent in conjunctival epithelium and skin.,
Background	The protein encoded by this gene, a member of the peptidase C1 family, is a lysosomal cysteine proteinase that may play an important role in corneal physiology. This gene is expressed in colorectal and breast carcinomas but not in normal colon, mammary gland, or peritumoral tissues, suggesting a possible role for this gene in tumor processes. Alternatively spliced variants, encoding the same protein, have been identified. [provided by RefSeq, Jan 2011],



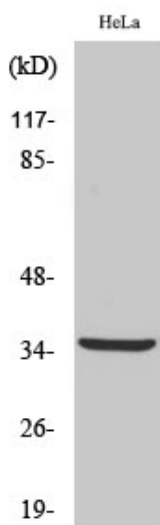
matters needing attention

Avoid repeated freezing and thawing!

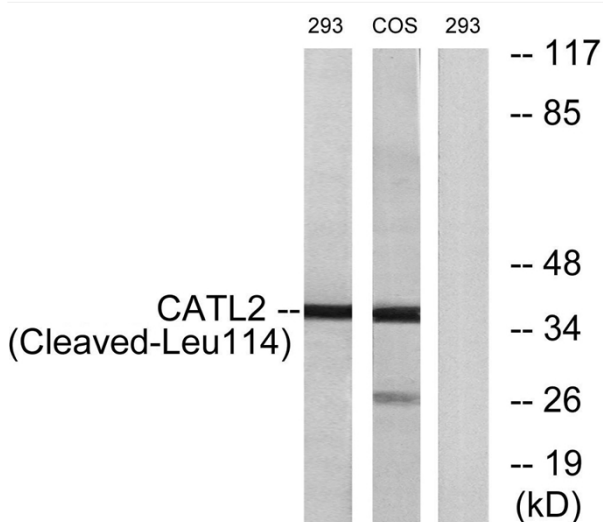
Usage suggestions

This product can be used in immunological reaction related experiments. For more information, please consult technical personnel.

Products Images



Western Blot analysis of various cells using Cleaved-Cathepsin L2 (L114) Polyclonal Antibody



Western blot analysis of lysates from 293 and COS cells, treated with etoposide 25uM 1h, using CATL2 (Cleaved-Leu114) Antibody. The lane on the right is blocked with the synthesized peptide.