

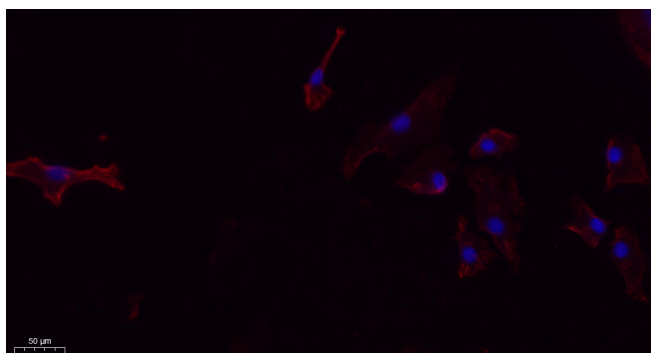


# FUNDC1 Polyclonal Antibody

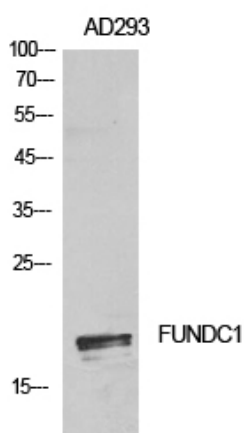
<b>Catalog No</b>	YP-Ab-02253
<b>Isotype</b>	IgG
<b>Reactivity</b>	Human;Mouse;Rat
<b>Applications</b>	WB IF;ELISA
<b>Gene Name</b>	FUNDC1
<b>Protein Name</b>	FUN14 domain-containing protein 1
<b>Immunogen</b>	The antiserum was produced against synthesized peptide derived from the N-terminal region of human FUNDC1. AA range:1-50
<b>Specificity</b>	FUNDC1 Polyclonal Antibody detects endogenous levels of FUNDC1 protein.
<b>Formulation</b>	Liquid in PBS containing 50% glycerol, 0.5% BSA and 0.02% sodium azide.
<b>Source</b>	Polyclonal, Rabbit,IgG
<b>Purification</b>	The antibody was affinity-purified from rabbit antiserum by affinity-chromatography using epitope-specific immunogen.
<b>Dilution</b>	WB 1:500-2000 IF 1:100-300 ELISA 1:5000-20000 Not yet tested in other applications.
<b>Concentration</b>	1 mg/ml
<b>Purity</b>	≥90%
<b>Storage Stability</b>	-20°C/1 year
<b>Synonyms</b>	FUNDC1; FUN14 domain-containing protein 1
<b>Observed Band</b>	17kD
<b>Cell Pathway</b>	Mitochondrion outer membrane ; Multi-pass membrane protein .
<b>Tissue Specificity</b>	Widely expressed.
<b>Function</b>	similarity:Belongs to the FUN14 family.,
<b>Background</b>	This gene encodes a protein with a FUN14 superfamily domain. The function of the encoded protein is not known. [provided by RefSeq, Sep 2011],
<b>matters needing attention</b>	Avoid repeated freezing and thawing!
<b>Usage suggestions</b>	This product can be used in immunological reaction related experiments. For more information, please consult technical personnel.



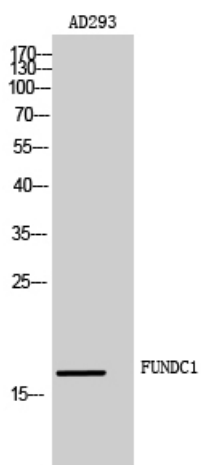
## Products Images



Immunofluorescence analysis of A549. 1, primary Antibody (red) was diluted at 1:200 (4°C overnight). 2, Goat Anti Rabbit IgG (H&L) - Alexa Fluor 594 Secondary antibody was diluted at 1:1000 (room temperature, 50min). 3, Picture B: DAPI (blue) 10min.



Western Blot analysis of AD293 cells using FUNDC1 Polyclonal Antibody. Antibody was diluted at 1:500. Secondary antibody (catalog#: RS0002) was diluted at 1:20000



Western Blot analysis of AD293 cells using FUNDC1 Polyclonal Antibody diluted at 1:500. Secondary antibody (catalog#: RS0002) was diluted at 1:20000