



CGR19 Polyclonal Antibody

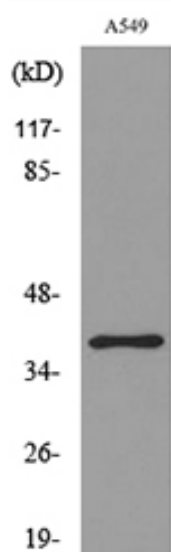
Catalog No	YP-Ab-02242
Isotype	IgG
Reactivity	Human;Rat;Mouse;
Applications	WB;ELISA
Gene Name	CGRRF1
Protein Name	Cell growth regulator with RING finger domain protein 1
Immunogen	The antiserum was produced against synthesized peptide derived from the C-terminal region of human CGRRF1. AA range:283-332
Specificity	CGR19 Polyclonal Antibody detects endogenous levels of CGR19 protein.
Formulation	Liquid in PBS containing 50% glycerol, 0.5% BSA and 0.02% sodium azide.
Source	Polyclonal, Rabbit,IgG
Purification	The antibody was affinity-purified from rabbit antiserum by affinity-chromatography using epitope-specific immunogen.
Dilution	Western Blot: 1/500 - 1/2000. ELISA: 1/20000. Not yet tested in other applications.
Concentration	1 mg/ml
Purity	≥90%
Storage Stability	-20°C/1 year
Synonyms	CGRRF1; CGR19; RNF197; Cell growth regulator with RING finger domain protein 1; Cell growth regulatory gene 19 protein; RING finger protein 197
Observed Band	38kD
Cell Pathway	Nucleus . Endoplasmic reticulum .
Tissue Specificity	Ubiquitously expressed with high expression in testis and the cerebellum.
Function	function:Able to inhibit growth in several cell lines.,similarity:Contains 1 RING-type zinc finger.,
Background	function:Able to inhibit growth in several cell lines.,similarity:Contains 1 RING-type zinc finger.,
matters needing attention	Avoid repeated freezing and thawing!
Usage suggestions	This product can be used in immunological reaction related experiments. For more information, please consult technical personnel.



Products Images



Western Blot analysis of A549 cells using CGR19 Polyclonal Antibody. Secondary antibody(catalog#:RS0002) was diluted at 1:20000



Western blot analysis of lysate from A549 cells, using CGRRF1 Antibody.