

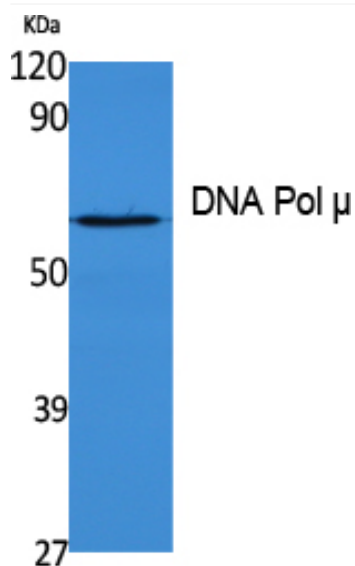


# DNA Pol $\mu$ Polyclonal Antibody

<b>Catalog No</b>	YP-Ab-02227
<b>Isotype</b>	IgG
<b>Reactivity</b>	Human;Rat;Mouse;
<b>Applications</b>	WB;ELISA
<b>Gene Name</b>	POLM
<b>Protein Name</b>	DNA-directed DNA/RNA polymerase mu
<b>Immunogen</b>	Synthesized peptide derived from DNA Pol $\mu$ . at AA range: 210-290
<b>Specificity</b>	DNA Pol $\mu$ Polyclonal Antibody detects endogenous levels of DNA Pol $\mu$ protein.
<b>Formulation</b>	Liquid in PBS containing 50% glycerol, 0.5% BSA and 0.02% sodium azide.
<b>Source</b>	Polyclonal, Rabbit,IgG
<b>Purification</b>	The antibody was affinity-purified from rabbit antiserum by affinity-chromatography using epitope-specific immunogen.
<b>Dilution</b>	Western Blot: 1/500 - 1/2000. ELISA: 1/40000. Not yet tested in other applications.
<b>Concentration</b>	1 mg/ml
<b>Purity</b>	$\geq 90\%$
<b>Storage Stability</b>	-20°C/1 year
<b>Synonyms</b>	POLM; polmu; DNA-directed DNA/RNA polymerase mu; Pol Mu; Terminal transferase
<b>Observed Band</b>	54kD
<b>Cell Pathway</b>	Nucleus .
<b>Tissue Specificity</b>	Expressed in a number of tissues. Abundant in thymus.
<b>Function</b>	catalytic activity:Deoxynucleoside triphosphate + DNA(n) = diphosphate + DNA(n+1).,cofactor:Magnesium.,function:Seems to act as an Ig mutase which is responsible for immunoglobulin (Ig) gene hypermutation.,similarity:Belongs to the DNA polymerase type-X family.,similarity:Contains 1 BRCT domain.,tissue specificity:Expressed in a number of tissues. Abundant in thymus.,
<b>Background</b>	catalytic activity:Deoxynucleoside triphosphate + DNA(n) = diphosphate + DNA(n+1).,cofactor:Magnesium.,function:Seems to act as an Ig mutase which is responsible for immunoglobulin (Ig) gene hypermutation.,similarity:Belongs to the DNA polymerase type-X family.,similarity:Contains 1 BRCT domain.,tissue specificity:Expressed in a number of tissues. Abundant in thymus.,
<b>matters needing attention</b>	Avoid repeated freezing and thawing!

**Usage suggestions**

This product can be used in immunological reaction related experiments. For more information, please consult technical personnel.

**Products Images**

Western Blot analysis of extracts from K562 cells, using DNA Pol  $\mu$  Polyclonal Antibody. Secondary antibody(catalog#:RS0002) was diluted at 1:20000 cells nucleus extracted by Minute TM Cytoplasmic and Nuclear Fractionation kit (SC-003, Inventbiotech, MN, USA).