



NPAS2 Polyclonal Antibody

| | |
|---------------------------|--|
| Catalog No | YP-Ab-02217 |
| Isotype | IgG |
| Reactivity | Human;Rat |
| Applications | WB;ELISA |
| Gene Name | NPAS2 |
| Protein Name | Neuronal PAS domain-containing protein 2 |
| Immunogen | Synthesized peptide derived from NPAS2 . at AA range: 340-420 |
| Specificity | NPAS2 Polyclonal Antibody detects endogenous levels of NPAS2 protein. |
| Formulation | Liquid in PBS containing 50% glycerol, 0.5% BSA and 0.02% sodium azide. |
| Source | Polyclonal, Rabbit,IgG |
| Purification | The antibody was affinity-purified from rabbit antiserum by affinity-chromatography using epitope-specific immunogen. |
| Dilution | Western Blot: 1/500 - 1/2000. ELISA: 1/5000. Not yet tested in other applications. |
| Concentration | 1 mg/ml |
| Purity | ≥90% |
| Storage Stability | -20°C/1 year |
| Synonyms | NPAS2; BHLHE9; MOP4; PASD4; Neuronal PAS domain-containing protein 2; Neuronal PAS2; Basic-helix-loop-helix-PAS protein MOP4; Class E basic helix-loop-helix protein 9; bHLHe9; Member of PAS protein 4; PAS domain-containing protein 4 |
| Observed Band | 91kD |
| Cell Pathway | Nucleus . |
| Tissue Specificity | Human lung,Lung, |
| Function | function:BMAL1-NPAS2 heterodimers activate E-box element (3'-CACGTG-5') transcription of a number of proteins of the circadian clock. This transcription is inhibited in a feedback loop by PER, and also by CRY proteins.,polymorphism:Variants in NPAS2 show a susceptibility to seasonal affective disorder (SAD) [MIM:608516]. SAD is a depressive condition resulting from seasonal changes, and with diurnal preference.,similarity:Contains 1 basic helix-loop-helix (bHLH) domain.,similarity:Contains 1 PAC (PAS-associated C-terminal) domain.,similarity:Contains 2 PAS (PER-ARNT-SIM) domains.,subunit:Component of the circadian clock oscillator which includes the CRY proteins, CLOCK or NPAS2, BMAL1 or BMAL2, CSNK1D and/or CSNK1E, TIMELESS and the PER proteins. Efficient DNA binding requires dimerization with another bHLH protein. Heterodimerization with CLOCK or NPAS2 is required |



for E-box-dependent t

Background

The protein encoded by this gene is a member of the basic helix-loop-helix (bHLH)-PAS family of transcription factors. A similar mouse protein may play a regulatory role in the acquisition of specific types of memory. It also may function as a part of a molecular clock operative in the mammalian forebrain. [provided by RefSeq, Jul 2008],

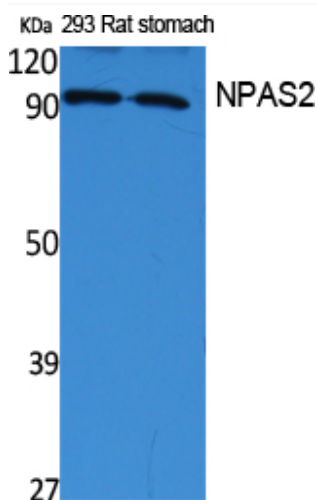
matters needing attention

Avoid repeated freezing and thawing!

Usage suggestions

This product can be used in immunological reaction related experiments. For more information, please consult technical personnel.

Products Images



Western Blot analysis of extracts from rat stomach, 293 cells, using NPAS2 Polyclonal Antibody. Secondary antibody(catalog#:RS0002) was diluted at 1:20000 cells nucleus extracted by Minute TM Cytoplasmic and Nuclear Fractionation kit (SC-003, Inventbiotech, MN, USA).