

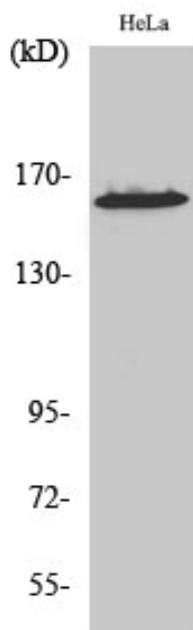


ZNF608 Polyclonal Antibody

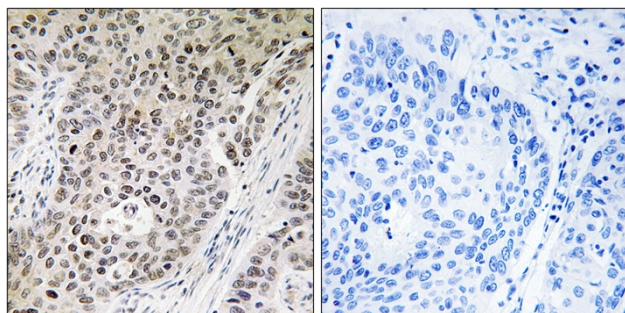
Catalog No	YP-Ab-02197
Isotype	IgG
Reactivity	Human;Mouse
Applications	WB;IHC;IF;ELISA
Gene Name	ZNF608
Protein Name	Zinc finger protein 608
Immunogen	The antiserum was produced against synthesized peptide derived from human ZNF608. AA range:1231-1280
Specificity	ZNF608 Polyclonal Antibody detects endogenous levels of ZNF608 protein.
Formulation	Liquid in PBS containing 50% glycerol, 0.5% BSA and 0.02% sodium azide.
Source	Polyclonal, Rabbit,IgG
Purification	The antibody was affinity-purified from rabbit antiserum by affinity-chromatography using epitope-specific immunogen.
Dilution	WB: 1/500 - 1/2000. IHC: 1/100 - 1/300. ELISA: 1/5000.. IF 1:50-200
Concentration	1 mg/ml
Purity	≥90%
Storage Stability	-20°C/1 year
Synonyms	ZNF608; KIAA1281; Zinc finger protein 608; Renal carcinoma antigen NY-REN-36
Observed Band	160kD
Cell Pathway	
Tissue Specificity	Brain,PNS,Renal cell carcinoma,Skin,Testis,
Function	miscellaneous:Antigen recognized by autologous antibody in patients with renal-cell carcinoma.,PTM:Phosphorylated upon DNA damage, probably by ATM or ATR.,similarity:Contains 1 C2H2-type zinc finger.,
Background	miscellaneous:Antigen recognized by autologous antibody in patients with renal-cell carcinoma.,PTM:Phosphorylated upon DNA damage, probably by ATM or ATR.,similarity:Contains 1 C2H2-type zinc finger.,
matters needing attention	Avoid repeated freezing and thawing!
Usage suggestions	This product can be used in immunological reaction related experiments. For more information, please consult technical personnel.



Products Images



Western Blot analysis of various cells using ZNF608 Polyclonal Antibody diluted at 1:500. Secondary antibody(catalog#:RS0002) was diluted at 1:20000



Immunohistochemistry analysis of paraffin-embedded human lung carcinoma tissue, using ZNF608 Antibody. The picture on the right is blocked with the synthesized peptide.