

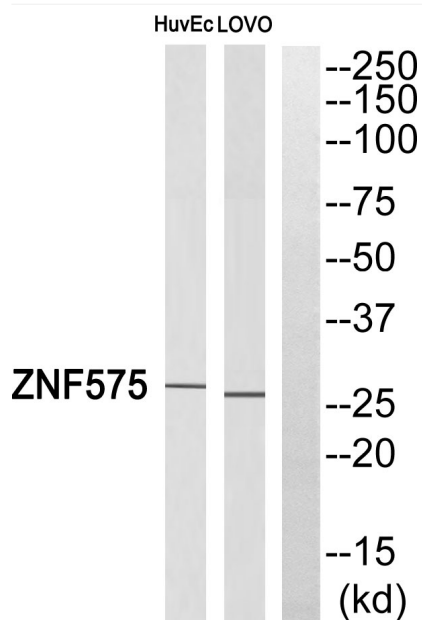


ZNF575 Polyclonal Antibody

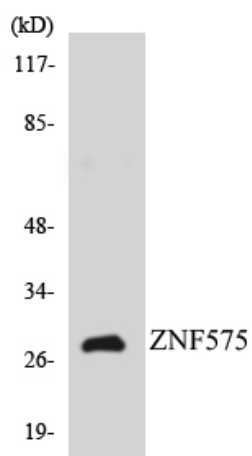
Catalog No	YP-Ab-02193
Isotype	IgG
Reactivity	Human;Rat;Mouse;
Applications	WB;ELISA
Gene Name	ZNF575
Protein Name	Zinc finger protein 575
Immunogen	The antiserum was produced against synthesized peptide derived from human ZNF575. AA range:10-59
Specificity	ZNF575 Polyclonal Antibody detects endogenous levels of ZNF575 protein.
Formulation	Liquid in PBS containing 50% glycerol, 0.5% BSA and 0.02% sodium azide.
Source	Polyclonal, Rabbit,IgG
Purification	The antibody was affinity-purified from rabbit antiserum by affinity-chromatography using epitope-specific immunogen.
Dilution	Western Blot: 1/500 - 1/2000. ELISA: 1/5000. Not yet tested in other applications.
Concentration	1 mg/ml
Purity	≥90%
Storage Stability	-20°C/1 year
Synonyms	ZNF575; Zinc finger protein 575
Observed Band	26kD
Cell Pathway	Nucleus .
Tissue Specificity	Pancreas,
Function	function:May be involved in transcriptional regulation.,similarity:Belongs to the krueppel C2H2-type zinc-finger protein family.,similarity:Contains 6 C2H2-type zinc fingers.,
Background	function:May be involved in transcriptional regulation.,similarity:Belongs to the krueppel C2H2-type zinc-finger protein family.,similarity:Contains 6 C2H2-type zinc fingers.,
matters needing attention	Avoid repeated freezing and thawing!
Usage suggestions	This product can be used in immunological reaction related experiments. For more information, please consult technical personnel.



Products Images



Western blot analysis of ZNF575 Antibody. The lane on the right is blocked with the ZNF575 peptide.



Western blot analysis of the lysates from HeLa cells using ZNF575 antibody.