

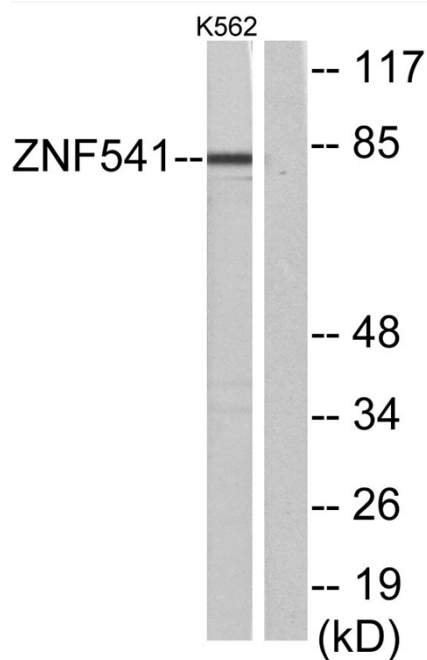


# ZNF541 Polyclonal Antibody

<b>Catalog No</b>	YP-Ab-02192
<b>Isotype</b>	IgG
<b>Reactivity</b>	Human;Rat;Mouse;
<b>Applications</b>	WB;ELISA
<b>Gene Name</b>	ZNF541
<b>Protein Name</b>	Zinc finger protein 541
<b>Immunogen</b>	The antiserum was produced against synthesized peptide derived from human ZNF541. AA range:931-980
<b>Specificity</b>	ZNF541 Polyclonal Antibody detects endogenous levels of ZNF541 protein.
<b>Formulation</b>	Liquid in PBS containing 50% glycerol, 0.5% BSA and 0.02% sodium azide.
<b>Source</b>	Polyclonal, Rabbit,IgG
<b>Purification</b>	The antibody was affinity-purified from rabbit antiserum by affinity-chromatography using epitope-specific immunogen.
<b>Dilution</b>	Western Blot: 1/500 - 1/2000. ELISA: 1/20000. Not yet tested in other applications.
<b>Concentration</b>	1 mg/ml
<b>Purity</b>	≥90%
<b>Storage Stability</b>	-20°C/1 year
<b>Synonyms</b>	ZNF541; Zinc finger protein 541
<b>Observed Band</b>	83kD
<b>Cell Pathway</b>	Nucleus .
<b>Tissue Specificity</b>	Epithelium,Testis,
<b>Function</b>	function:Component of some chromatin remodeling multiprotein complex that plays a role during spermatogenesis.,similarity:Contains 1 ELM2 domain.,similarity:Contains 1 SANT domain.,similarity:Contains 5 C2H2-type zinc fingers.,subunit:Interacts with HDAC1 and HSPA2.,
<b>Background</b>	function:Component of some chromatin remodeling multiprotein complex that plays a role during spermatogenesis.,similarity:Contains 1 ELM2 domain.,similarity:Contains 1 SANT domain.,similarity:Contains 5 C2H2-type zinc fingers.,subunit:Interacts with HDAC1 and HSPA2.,
<b>matters needing attention</b>	Avoid repeated freezing and thawing!
<b>Usage suggestions</b>	This product can be used in immunological reaction related experiments. For more information, please consult technical personnel.



## Products Images



Western blot analysis of lysates from K562 cells, using ZNF541 Antibody. The lane on the right is blocked with the synthesized peptide.