



ZNF436 Polyclonal Antibody

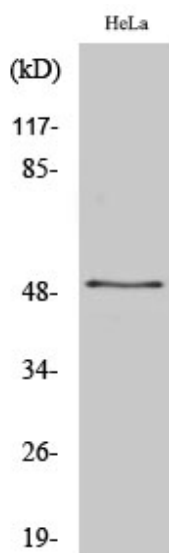
Catalog No	YP-Ab-02188
Isotype	IgG
Reactivity	Human;Rat;Mouse;
Applications	WB;IHC;IF;ELISA
Gene Name	ZNF436
Protein Name	Zinc finger protein 436
Immunogen	The antiserum was produced against synthesized peptide derived from human ZNF436. AA range:71-120
Specificity	ZNF436 Polyclonal Antibody detects endogenous levels of ZNF436 protein.
Formulation	Liquid in PBS containing 50% glycerol, 0.5% BSA and 0.02% sodium azide.
Source	Polyclonal, Rabbit,IgG
Purification	The antibody was affinity-purified from rabbit antiserum by affinity-chromatography using epitope-specific immunogen.
Dilution	WB: 1/500 - 1/2000. IHC: 1/100 - 1/300. ELISA: 1/20000.. IF 1:50-200
Concentration	1 mg/ml
Purity	≥90%
Storage Stability	-20°C/1 year
Synonyms	ZNF436; KIAA1710; Zinc finger protein 436
Observed Band	50kD
Cell Pathway	Nucleus .
Tissue Specificity	Expressed in fetal brain, heart, liver, spleen, bladder, lung, skin, skeletal muscle, stomach and pancreas.
Function	function:May be a transcriptional repressor.,similarity:Belongs to the krueppel C2H2-type zinc-finger protein family.,similarity:Contains 1 KRAB domain.,similarity:Contains 12 C2H2-type zinc fingers.,tissue specificity:Expressed in fetal brain, heart, liver, spleen, bladder, lung, skin, skeletal muscle, stomach and pancreas.,
Background	function:May be a transcriptional repressor.,similarity:Belongs to the krueppel C2H2-type zinc-finger protein family.,similarity:Contains 1 KRAB domain.,similarity:Contains 12 C2H2-type zinc fingers.,tissue specificity:Expressed in fetal brain, heart, liver, spleen, bladder, lung, skin, skeletal muscle, stomach and pancreas.,
matters needing attention	Avoid repeated freezing and thawing!



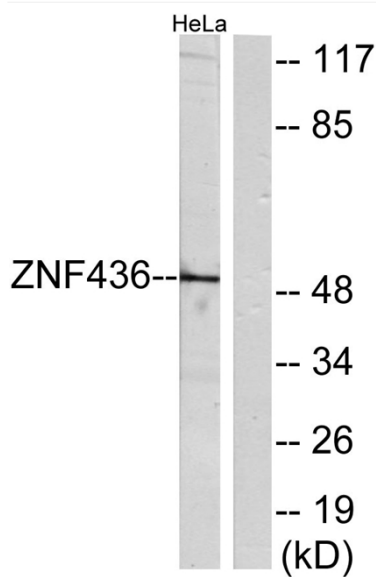
Usage suggestions

This product can be used in immunological reaction related experiments. For more information, please consult technical personnel.

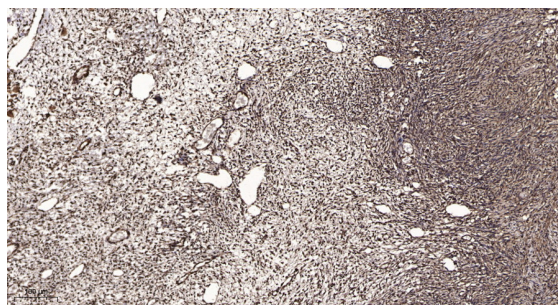
Products Images



Western Blot analysis of various cells using ZNF436 Polyclonal Antibody. Secondary antibody(catalog#:RS0002) was diluted at 1:20000 cells nucleus extracted by Minute TM Cytoplasmic and Nuclear Fractionation kit (SC-003, Inventbiotech, MN, USA).



Western blot analysis of lysates from HeLa cells, using ZNF436 Antibody. The lane on the right is blocked with the synthesized peptide.



Immunohistochemical analysis of paraffin-embedded human oophoroma. 1, Antibody was diluted at 1:200(4° overnight). 2, Tris-EDTA, pH9.0 was used for antigen retrieval. 3, Secondary antibody was diluted at 1:200(room temperature, 45min).