



ZDHHC20 Polyclonal Antibody

Catalog No	YP-Ab-02168
Isotype	IgG
Reactivity	Human;Mouse;Rat
Applications	WB;ELISA
Gene Name	ZDHHC20
Protein Name	Probable palmitoyltransferase ZDHHC20
Immunogen	The antiserum was produced against synthesized peptide derived from human ZDHHC20. AA range:72-121
Specificity	ZDHHC20 Polyclonal Antibody detects endogenous levels of ZDHHC20 protein.
Formulation	Liquid in PBS containing 50% glycerol, 0.5% BSA and 0.02% sodium azide.
Source	Polyclonal, Rabbit,IgG
Purification	The antibody was affinity-purified from rabbit antiserum by affinity-chromatography using epitope-specific immunogen.
Dilution	Western Blot: 1/500 - 1/2000. ELISA: 1/10000. Not yet tested in other applications.
Concentration	1 mg/ml
Purity	≥90%
Storage Stability	-20°C/1 year
Synonyms	ZDHHC20; Probable palmitoyltransferase ZDHHC20; Zinc finger DHHC domain-containing protein 20; DHHC-20
Observed Band	37kD
Cell Pathway	Golgi apparatus membrane ; Multi-pass membrane protein . Cell membrane ; Multi-pass membrane protein . Cytoplasm, perinuclear region . Endoplasmic reticulum membrane ; Multi-pass membrane protein . Endoplasmic reticulum-Golgi intermediate compartment membrane ; Multi-pass membrane protein .
Tissue Specificity	PCR rescued clones,Synovial membrane,Testis,
Function	catalytic activity:Palmitoyl-CoA + protein-cysteine = S-palmitoyl protein + CoA.,domain:The DHHC domain is required for palmitoyltransferase activity.,PTM:Phosphorylated upon DNA damage, probably by ATM or ATR.,similarity:Belongs to the DHHC palmitoyltransferase family.,similarity:Contains 1 DHHC-type zinc finger.,
Background	catalytic activity:Palmitoyl-CoA + protein-cysteine = S-palmitoyl protein + CoA.,domain:The DHHC domain is required for palmitoyltransferase activity.,PTM:Phosphorylated upon DNA damage, probably by ATM or ATR.,similarity:Belongs to the DHHC palmitoyltransferase family.,similarity:Contains 1 DHHC-type zinc finger.,

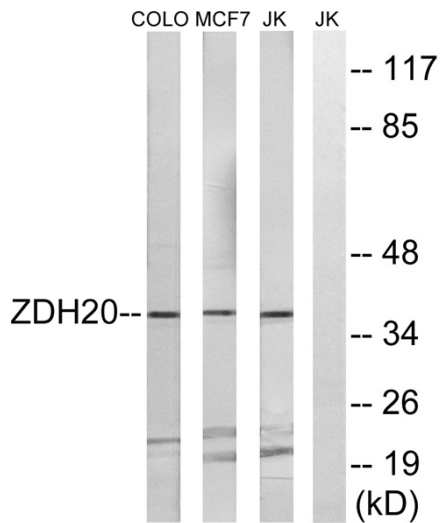
**matters needing attention**

Avoid repeated freezing and thawing!

Usage suggestions

This product can be used in immunological reaction related experiments. For more information, please consult technical personnel.

Products Images



Western blot analysis of lysates from Jurkat, MCF-7, and COLO cells, using ZDHHC20 Antibody. The lane on the right is blocked with the synthesized peptide.