



ZAC1 Polyclonal Antibody

Catalog No	YP-Ab-02161
Isotype	IgG
Reactivity	Human;Rat;Mouse;
Applications	WB;ELISA
Gene Name	PLAGL1
Protein Name	Zinc finger protein PLAGL1
Immunogen	The antiserum was produced against synthesized peptide derived from human PLAGL1. AA range:311-360
Specificity	ZAC1 Polyclonal Antibody detects endogenous levels of ZAC1 protein.
Formulation	Liquid in PBS containing 50% glycerol, 0.5% BSA and 0.02% sodium azide.
Source	Polyclonal, Rabbit,IgG
Purification	The antibody was affinity-purified from rabbit antiserum by affinity-chromatography using epitope-specific immunogen.
Dilution	Western Blot: 1/500 - 1/2000. ELISA: 1/10000. Not yet tested in other applications.
Concentration	1 mg/ml
Purity	≥90%
Storage Stability	-20°C/1 year
Synonyms	PLAGL1; LOT1; ZAC; Zinc finger protein PLAGL1; Lost on transformation 1; LOT-1; Pleiomorphic adenoma-like protein 1; Tumor supressor ZAC
Observed Band	50kD
Cell Pathway	Nucleus .
Tissue Specificity	Colon,Fetal kidney,Lung,Mammary gland,Pituitary,Placenta,
Function	function:Shows weak transcriptional activatory activity. Transcriptional regulator of the type 1 receptor for pituitary adenylate cyclase-activating polypeptide.,similarity:Belongs to the krueppel C2H2-type zinc-finger protein family.,similarity:Contains 7 C2H2-type zinc fingers.,
Background	This gene encodes a C2H2 zinc finger protein that functions as a suppressor of cell growth. This gene is often deleted or methylated and silenced in cancer cells. In addition, overexpression of this gene during fetal development is thought to be the causal factor for transient neonatal diabetes mellitus (TNDM). Alternative splicing and the use of alternative promoters results in multiple transcript variants encoding two different protein isoforms. The P1 downstream promoter of this gene is imprinted, with preferential expression from the paternal allele in many tissues. [provided by RefSeq, Nov 2015],



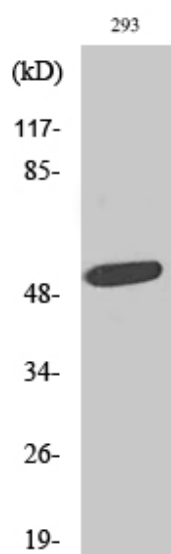
matters needing attention

Avoid repeated freezing and thawing!

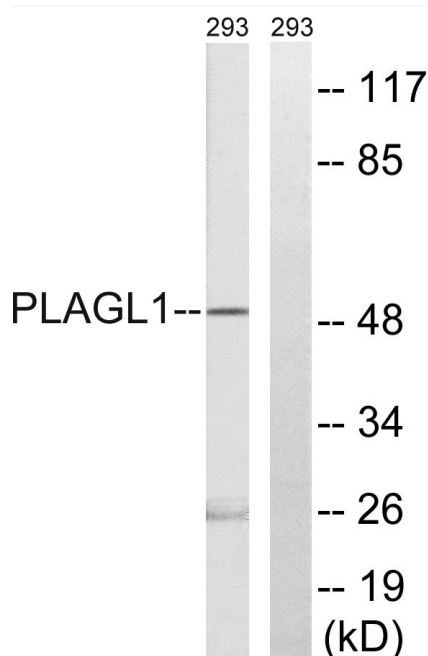
Usage suggestions

This product can be used in immunological reaction related experiments. For more information, please consult technical personnel.

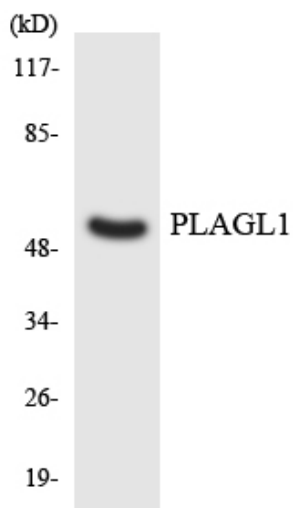
Products Images



Western Blot analysis of various cells using ZAC1 Polyclonal Antibody. Secondary antibody(catalog#:RS0002) was diluted at 1:20000 cells nucleus extracted by Minute TM Cytoplasmic and Nuclear Fractionation kit (SC-003, Inventbiotech, MN, USA).



Western blot analysis of lysates from 293 cells, using PLAGL1 Antibody. The lane on the right is blocked with the synthesized peptide.



Western blot analysis of the lysates from HeLa cells using PLAGL1 antibody.