



TCEAL1 Polyclonal Antibody

Catalog No	YP-Ab-02084
Isotype	IgG
Reactivity	Human;Mouse;Rat
Applications	WB;IHC;IF;ELISA
Gene Name	TCEAL1
Protein Name	Transcription elongation factor A protein-like 1
Immunogen	The antiserum was produced against synthesized peptide derived from human TCEAL1. AA range:91-140
Specificity	TCEAL1 Polyclonal Antibody detects endogenous levels of TCEAL1 protein.
Formulation	Liquid in PBS containing 50% glycerol, 0.5% BSA and 0.02% sodium azide.
Source	Polyclonal, Rabbit,IgG
Purification	The antibody was affinity-purified from rabbit antiserum by affinity-chromatography using epitope-specific immunogen.
Dilution	WB: 1/500 - 1/2000.IHC-p:1:50-300 ELISA: 1/20000.. IF 1:50-200
Concentration	1 mg/ml
Purity	≥90%
Storage Stability	-20°C/1 year
Synonyms	TCEAL1; SIIR; Transcription elongation factor A protein-like 1; TCEA-like protein 1; Nuclear phosphoprotein p21/SIIR; Transcription elongation factor S-II protein-like 1
Observed Band	20kD
Cell Pathway	Nucleus.
Tissue Specificity	Expressed in all tissues examined. Highly expressed in heart, ovary, prostate and skeletal muscle. Moderately expressed in brain, placenta, testis and small intestine. Weakly expressed in lung, liver and spleen. Expressed in several cancer cell lines.
Function	function:May be involved in transcriptional regulation. Modulates various viral and cellular promoters in a promoter context-dependent manner. For example, transcription from the FOS promoter is increased, while Rous sarcoma virus (RSV) long terminal repeat (LTR) promoter activity is repressed. Does not bind DNA directly.,PTM:Phosphorylation of Ser-36 and Ser-37 is critical for transcriptional repression.,similarity:Belongs to the TFS-II family. TFA subfamily.,tissue specificity:Expressed in all tissues examined. Highly expressed in heart, ovary, prostate and skeletal muscle. Moderately expressed in brain, placenta, testis and small intestine. Weakly expressed in lung, liver and spleen. Expressed in several cancer cell lines.,



Background

This gene encodes a member of the transcription elongation factor A (SII)-like (TCEAL) gene family. Members of this family may function as nuclear phosphoproteins that modulate transcription in a promoter context-dependent manner. The encoded protein is similar to transcription elongation factor A/transcription factor SII and contains a zinc finger-like motif as well as a sequence related to the transcription factor SII Pol II-binding region. It may exert its effects via protein-protein interactions with other transcriptional regulators rather than via direct binding of DNA. Multiple family members are located on the X chromosome. Alternative splicing results in multiple transcript variants encoding a single isoform. [provided by RefSeq, Jul 2008],

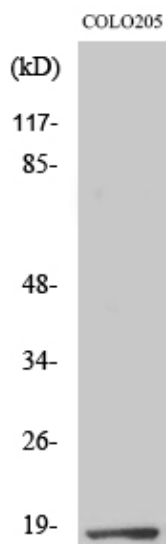
matters needing attention

Avoid repeated freezing and thawing!

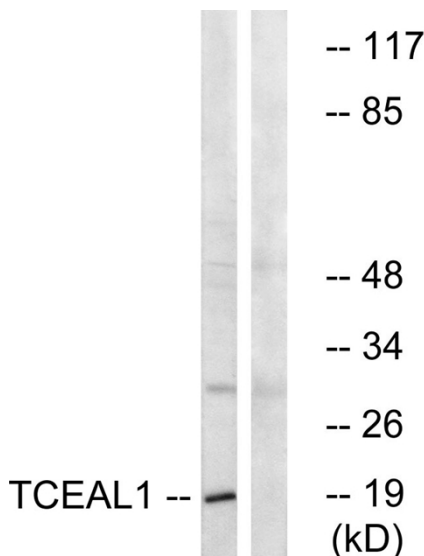
Usage suggestions

This product can be used in immunological reaction related experiments. For more information, please consult technical personnel.

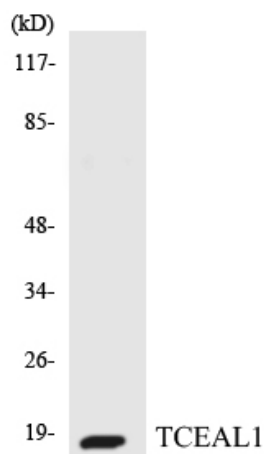
Products Images



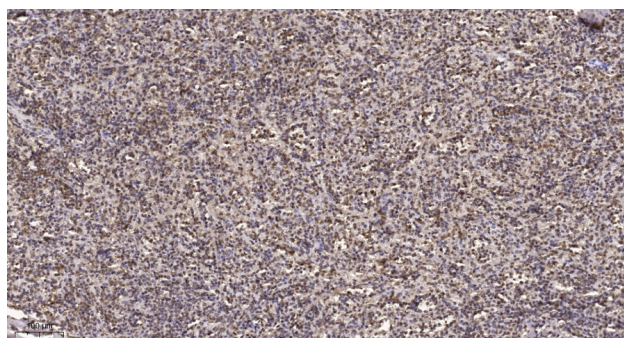
Western Blot analysis of various cells using TCEAL1 Polyclonal Antibody cells nucleus extracted by Minute TM Cytoplasmic and Nuclear Fractionation kit (SC-003, Inventbiotech, MN, USA).



Western blot analysis of lysates from COLO cells, using TCEAL1 Antibody. The lane on the right is blocked with the synthesized peptide.



Western blot analysis of the lysates from HeLa cells using TCEAL1 antibody.



Immunohistochemical analysis of paraffin-embedded human spleen. 1, Tris-EDTA, pH9.0 was used for antigen retrieval. 2 Antibody was diluted at 1:200 (4° overnight). 3, Secondary antibody was diluted at 1:200 (room temperature, 45min).