



TBX2 Polyclonal Antibody

Catalog No	YP-Ab-02080
Isotype	IgG
Reactivity	Human;Mouse
Applications	WB;IHC;IF;ELISA
Gene Name	TBX2
Protein Name	T-box transcription factor TBX2
Immunogen	The antiserum was produced against synthesized peptide derived from human TBX2. AA range:251-300
Specificity	TBX2 Polyclonal Antibody detects endogenous levels of TBX2 protein.
Formulation	Liquid in PBS containing 50% glycerol, 0.5% BSA and 0.02% sodium azide.
Source	Polyclonal, Rabbit,IgG
Purification	The antibody was affinity-purified from rabbit antiserum by affinity-chromatography using epitope-specific immunogen.
Dilution	WB: 1/500 - 1/2000. IHC: 1/100 - 1/300. ELISA: 1/20000.. IF 1:50-200
Concentration	1 mg/ml
Purity	≥90%
Storage Stability	-20°C/1 year
Synonyms	TBX2; T-box transcription factor TBX2; T-box protein 2
Observed Band	74kD
Cell Pathway	Nucleus .
Tissue Specificity	Expressed primarily in adult in kidney, lung, and placenta. Weak expression in heart and ovary.
Function	function:Involved in the transcriptional regulation of genes required for mesoderm differentiation. Probably plays a role in limb pattern formation.,similarity:Contains 1 T-box DNA-binding domain.,tissue specificity:Expressed primarily in adult in kidney, lung, and placenta. Weak expression in heart and ovary.,
Background	This gene is a member of a phylogenetically conserved family of genes that share a common DNA-binding domain, the T-box. T-box genes encode transcription factors involved in the regulation of developmental processes. This gene product is the human homolog of mouse Tbx2, and shares strong sequence similarity with Drosophila omb protein. Expression studies indicate that this gene may have a potential role in tumorigenesis as an immortalizing agent. Transcript heterogeneity due to alternative polyadenylation has been noted for this gene. [provided by RefSeq, Jul 2008],



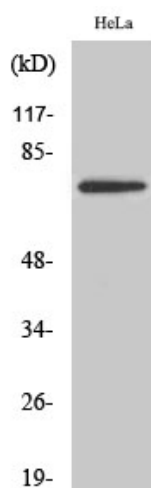
matters needing attention

Avoid repeated freezing and thawing!

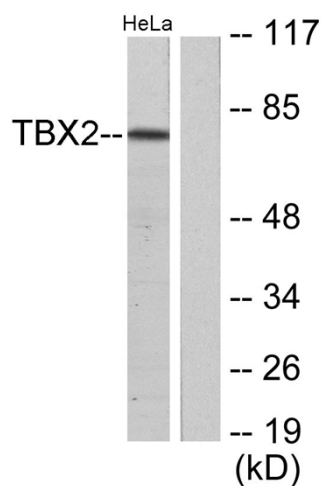
Usage suggestions

This product can be used in immunological reaction related experiments. For more information, please consult technical personnel.

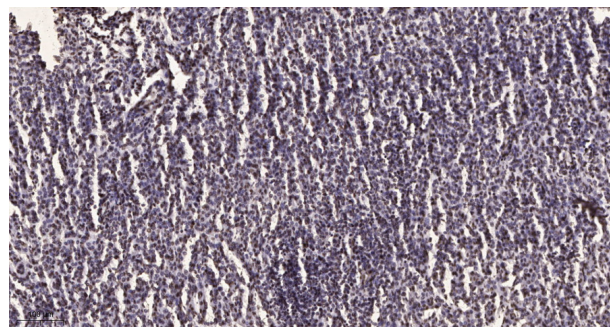
Products Images



Western Blot analysis of various cells using TBX2 Polyclonal Antibody cells nucleus extracted by Minute TM Cytoplasmic and Nuclear Fractionation kit (SC-003, Invent biotech, MN, USA).



Western blot analysis of lysates from HeLa cells, using TBX2 Antibody. The lane on the right is blocked with the synthesized peptide.



Immunohistochemical analysis of paraffin-embedded human brain tumor. 1, Antibody was diluted at 1:200 (4° overnight). 2, Tris-EDTA, pH 9.0 was used for antigen retrieval. 3, Secondary antibody was diluted at 1:200 (room temperature, 45 min).