



# TAF II p18 Polyclonal Antibody

<b>Catalog No</b>	YP-Ab-02068
<b>Isotype</b>	IgG
<b>Reactivity</b>	Human;Mouse
<b>Applications</b>	IHC;IF;ELISA
<b>Gene Name</b>	TAF13
<b>Protein Name</b>	Transcription initiation factor TFIID subunit 13
<b>Immunogen</b>	The antiserum was produced against synthesized peptide derived from human TAF13. AA range:71-120
<b>Specificity</b>	TAF II p18 Polyclonal Antibody detects endogenous levels of TAF II p18 protein.
<b>Formulation</b>	Liquid in PBS containing 50% glycerol, 0.5% BSA and 0.02% sodium azide.
<b>Source</b>	Polyclonal, Rabbit,IgG
<b>Purification</b>	The antibody was affinity-purified from rabbit antiserum by affinity-chromatography using epitope-specific immunogen.
<b>Dilution</b>	IHC: 1/100 - 1/300. ELISA: 1/40000.. IF 1:50-200
<b>Concentration</b>	1 mg/ml
<b>Purity</b>	≥90%
<b>Storage Stability</b>	-20°C/1 year
<b>Synonyms</b>	TAF13; TAF2K; TAFII18; Transcription initiation factor TFIID subunit 13; Transcription initiation factor TFIID 18 kDa subunit; TAF(II)18; TAFII-18; TAFII18
<b>Observed Band</b>	
<b>Cell Pathway</b>	Nucleus .
<b>Tissue Specificity</b>	PCR rescued clones,
<b>Function</b>	domain:The binding of TAF10 and TAF11 requires distinct domains of TAF13.,function:TFIID beta-specific TAFII.,similarity:Belongs to the TAF13 family.,similarity:Contains 1 histone-fold domain.,subunit:TFIID is composed of TATA binding protein (TBP) and a number of TBP-associated factors (TAFs). Interacts with TBP, and more strongly with TAF10 and TAF11.,
<b>Background</b>	Initiation of transcription by RNA polymerase II requires the activities of more than 70 polypeptides. The protein that coordinates these activities is transcription factor IID (TFIID), which binds to the core promoter to position the polymerase properly, serves as the scaffold for assembly of the remainder of the transcription complex, and acts as a channel for regulatory signals. TFIID is composed of the TATA-binding protein (TBP) and a group of evolutionarily conserved proteins known as TBP-associated factors or TAFs. TAFs may participate in basal transcription, serve as coactivators, function in promoter recognition or modify general transcription factors (GTFs) to facilitate complex assembly and



transcription initiation. This gene encodes a small subunit associated with a subset of TFIID complexes. This subunit interacts with TBP and with two other small subunits of TFI

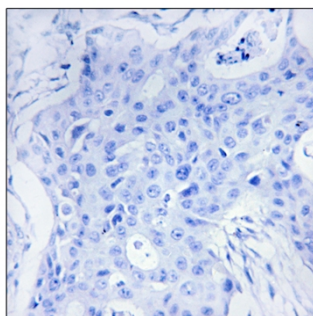
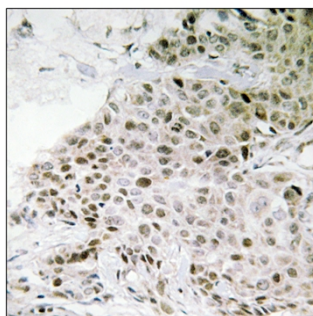
**matters needing attention**

Avoid repeated freezing and thawing!

**Usage suggestions**

This product can be used in immunological reaction related experiments. For more information, please consult technical personnel.

**Products Images**



Immunohistochemistry analysis of paraffin-embedded human breast carcinoma tissue, using TAF13 Antibody. The picture on the right is blocked with the synthesized peptide.