



# SCAF1 Polyclonal Antibody

<b>Catalog No</b>	YP-Ab-02004
<b>Isotype</b>	IgG
<b>Reactivity</b>	Human;Mouse
<b>Applications</b>	WB;IHC
<b>Gene Name</b>	SCAF1
<b>Protein Name</b>	Splicing factor arginine/serine-rich 19
<b>Immunogen</b>	The antiserum was produced against synthesized peptide derived from human SFRS19. AA range:41-90
<b>Specificity</b>	SCAF1 Polyclonal Antibody detects endogenous levels of SCAF1 protein.
<b>Formulation</b>	Liquid in PBS containing 50% glycerol, 0.5% BSA and 0.02% sodium azide.
<b>Source</b>	Polyclonal, Rabbit,IgG
<b>Purification</b>	The antibody was affinity-purified from rabbit antiserum by affinity-chromatography using epitope-specific immunogen.
<b>Dilution</b>	WB 1:500-2000;IHC-p 1:50-300
<b>Concentration</b>	1 mg/ml
<b>Purity</b>	≥90%
<b>Storage Stability</b>	-20°C/1 year
<b>Synonyms</b>	SCAF1; SFRS19; SRA1; Splicing factor; arginine/serine-rich 19; SR-related and CTD-associated factor 1; SR-related-CTD-associated factor; SCAF; Serine arginine-rich pre-mRNA splicing factor SR-A1; SR-A1
<b>Observed Band</b>	140kD
<b>Cell Pathway</b>	Nucleus .
<b>Tissue Specificity</b>	Ubiquitous. Highly expressed in fetal brain and liver, poorly expressed in salivary gland, heart, skin and ovary. Expressed in colorectal carcinomas and ovarian cancers. Overexpressed in colorectal carcinomas as compared to normal colonic mucosa.
<b>Function</b>	function:May function in pre-mRNA splicing.,induction:Up-regulated by estrogens, androgens and glucocorticoids.,similarity:Belongs to the splicing factor SR family.,subunit:Interacts with POLR2A.,tissue specificity:Ubiquitous. Highly expressed in fetal brain and liver, poorly expressed in salivary gland, heart, skin and ovary. Expressed in colorectal carcinomas and ovarian cancers. Overexpressed in colorectal carcinomas as compared to normal colonic mucosa.,
<b>Background</b>	function:May function in pre-mRNA splicing.,induction:Up-regulated by estrogens, androgens and glucocorticoids.,similarity:Belongs to the splicing factor SR family.,subunit:Interacts with POLR2A.,tissue specificity:Ubiquitous. Highly expressed in fetal brain and liver, poorly expressed in salivary gland, heart, skin



and ovary. Expressed in colorectal carcinomas and ovarian cancers.  
Overexpressed in colorectal carcinomas as compared to normal colonic mucosa.,

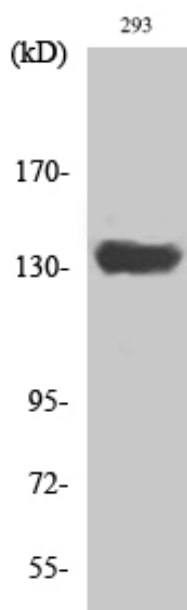
**matters needing attention**

Avoid repeated freezing and thawing!

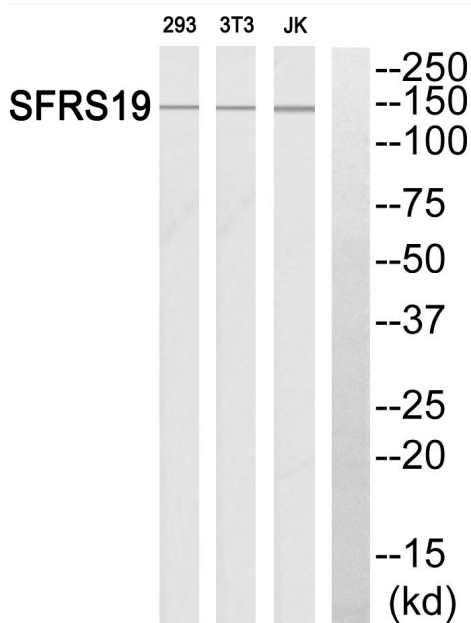
**Usage suggestions**

This product can be used in immunological reaction related experiments. For more information, please consult technical personnel.

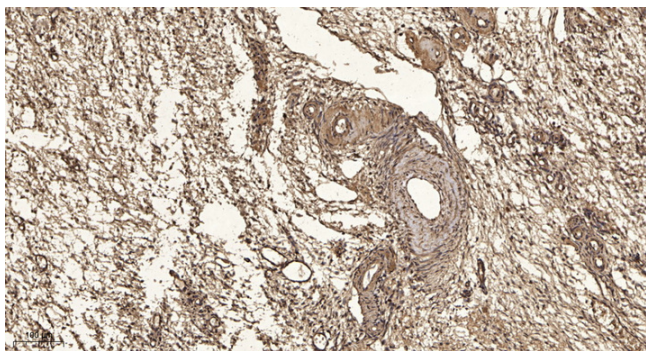
**Products Images**



Western Blot analysis of various cells using SCAF1 Polyclonal Antibody diluted at 1:2000 cells nucleus extracted by Minute TM Cytoplasmic and Nuclear Fractionation kit (SC-003, Invent biotech, MN, USA).



Western blot analysis of SFRS19 Antibody. The lane on the right is blocked with the SFRS19 peptide.



Immunohistochemical analysis of paraffin-embedded human oophoroma. 1, Antibody was diluted at 1:200(4° overnight). 2, Tris-EDTA,pH9.0 was used for antigen retrieval. 3,Secondary antibody was diluted at 1:200(room temperature, 45min).