



RNF138 Polyclonal Antibody

Catalog No	YP-Ab-01987
Isotype	IgG
Reactivity	Human;Mouse;Rat
Applications	WB;IHC
Gene Name	RNF138
Protein Name	E3 ubiquitin-protein ligase RNF138
Immunogen	The antiserum was produced against synthesized peptide derived from human RNF138. AA range:31-80
Specificity	RNF138 Polyclonal Antibody detects endogenous levels of RNF138 protein.
Formulation	Liquid in PBS containing 50% glycerol, 0.5% BSA and 0.02% sodium azide.
Source	Polyclonal, Rabbit,IgG
Purification	The antibody was affinity-purified from rabbit antiserum by affinity-chromatography using epitope-specific immunogen.
Dilution	WB 1:500-2000;IHC-p 1:50-300
Concentration	1 mg/ml
Purity	≥90%
Storage Stability	-20°C/1 year
Synonyms	RNF138; NARF; HSD-4; HSD4; E3 ubiquitin-protein ligase RNF138; Nemo-like kinase-associated RING finger protein; NLK-associated RING finger protein; hNARF; RING finger protein 138
Observed Band	28kD
Cell Pathway	Chromosome . Recruited at DNA damage sites (PubMed:26502055). Localizes to sites of double-strand break: localization to double-strand break sites is mediated by the zinc fingers (PubMed:26502055, PubMed:26502057). .
Tissue Specificity	Placenta,Testis,Uterus,
Function	domain:The RING-type zinc finger domain mediates binding to an E2 ubiquitin-conjugating enzyme.,function:E3 ubiquitin-protein ligase. Together with NLK, involved in the ubiquitination and degradation of TCF/LEF. Also exhibits auto-ubiquitination activity in combination with UBE2K. May act as a negative regulator in the Wnt/beta-catenin-mediated signaling pathway.,pathway:Protein modification; protein ubiquitination.,PTM:Auto-ubiquitinated.,PTM:Phosphorylated upon DNA damage, probably by ATM or ATR.,similarity:Contains 1 RING-type zinc finger.,subunit:Interacts with nlk.,
Background	ring finger protein 138(RNF138) Homo sapiens The protein encoded by this gene contains a RING finger, a motif present in a variety of functionally distinct proteins and known to be involved in protein-DNA and protein-protein interactions.



Alternatively spliced transcript variants encoding distinct isoforms have been observed. [provided by RefSeq, Jul 2008],

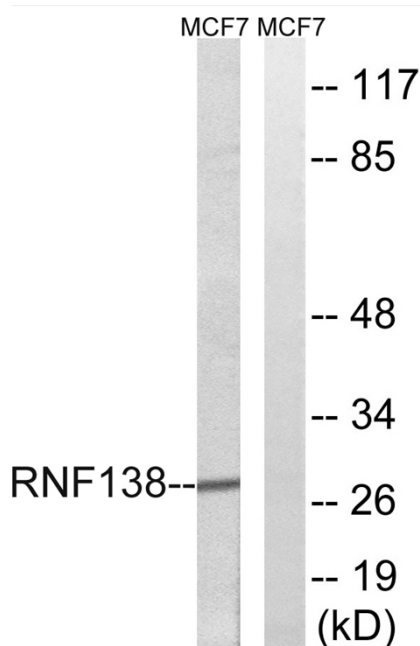
matters needing attention

Avoid repeated freezing and thawing!

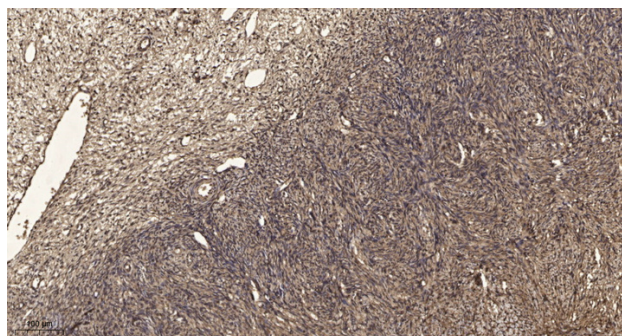
Usage suggestions

This product can be used in immunological reaction related experiments. For more information, please consult technical personnel.

Products Images



Western blot analysis of lysates from MCF-7 cells, using RNF138 Antibody. The lane on the right is blocked with the synthesized peptide.



Immunohistochemical analysis of paraffin-embedded human oophoroma. 1, Antibody was diluted at 1:200(4° overnight). 2, Tris-EDTA, pH9.0 was used for antigen retrieval. 3, Secondary antibody was diluted at 1:200(room temperature, 45min).