



RMP Polyclonal Antibody

Catalog No	YP-Ab-01983
Isotype	IgG
Reactivity	Human;Rat;Mouse;
Applications	WB;IHC;IF;ELISA
Gene Name	URI1
Protein Name	Unconventional prefoldin RPB5 interactor 1
Immunogen	The antiserum was produced against synthesized peptide derived from human RMP. AA range:415-464
Specificity	RMP Polyclonal Antibody detects endogenous levels of RMP protein.
Formulation	Liquid in PBS containing 50% glycerol, 0.5% BSA and 0.02% sodium azide.
Source	Polyclonal, Rabbit,IgG
Purification	The antibody was affinity-purified from rabbit antiserum by affinity-chromatography using epitope-specific immunogen.
Dilution	WB: 1/500 - 1/2000. IHC: 1/100 - 1/300. ELISA: 1/40000.. IF 1:50-200
Concentration	1 mg/ml
Purity	≥90%
Storage Stability	-20°C/1 year
Synonyms	URI1; C19orf2; NNX3; PPP1R19; RMP; URI; Unconventional prefoldin RPB5 interactor 1; Protein NNX3; Protein phosphatase 1 regulatory subunit 19; RNA polymerase II subunit 5-mediating protein; RPB5-mediating protein
Observed Band	56kD
Cell Pathway	Nucleus. Cytoplasm. Mitochondrion. Cell projection, dendrite . Colocalizes with PFDN2, PFDN4, PPP1CC, RPS6KB1 and STAP1 at mitochondrion.
Tissue Specificity	Ubiquitous. Expressed in ovarian cancers (at protein level). Expressed strongly in skeletal muscle. Expressed weakly in brain, heart, pancreas and in prostate epithelial cells.
Function	function:Seems to be a scaffolding protein able to assemble a prefoldin-like complex that contains PFDs and proteins with roles in transcription and ubiquitination.,similarity:Belongs to the RNA polymerase II subunit 5-mediating protein family.,subunit:Component of the URI complex that contains PFD2, POLR2E/RPB5, TIP48, TIP49 and URI. Interacts with POLR2E/RPB5 and LRPPRC.,tissue specificity:Ubiquitous.,
Background	This gene encodes member of the prefoldin family of molecular chaperones. The encoded protein functions as a scaffolding protein and plays roles in ubiquitination and transcription, in part though interactions with the RNA polymerase II subunit RPB5. This gene may play a role in multiple malignancies including ovarian cancer and hepatocellular carcinoma. Alternatively spliced transcript variants



encoding multiple isoforms have been observed for this gene, and a pseudogene of this gene is located on the long arm of chromosome 22. [provided by RefSeq, Nov 2011],

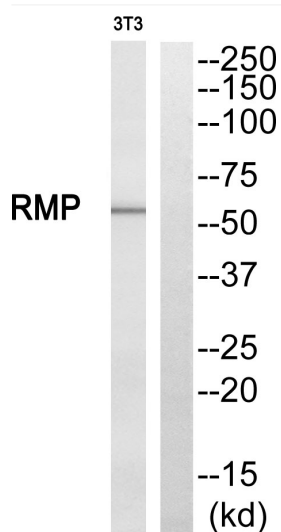
matters needing attention

Avoid repeated freezing and thawing!

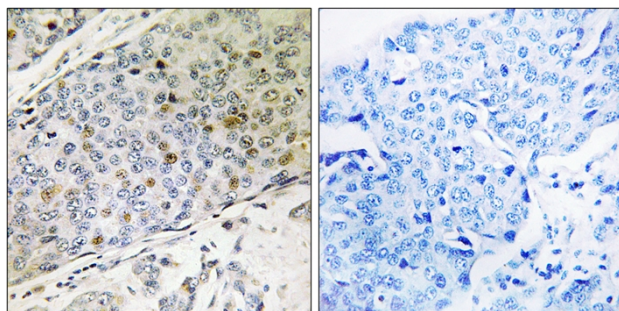
Usage suggestions

This product can be used in immunological reaction related experiments. For more information, please consult technical personnel.

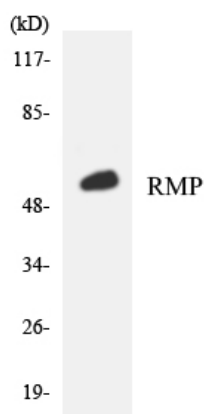
Products Images



Western blot analysis of RMP Antibody. The lane on the right is blocked with the RMP peptide.



Immunohistochemistry analysis of paraffin-embedded human breast carcinoma, using RMP Antibody. The lane on the right is blocked with the RMP peptide.



Western blot analysis of the lysates from K562 cells using RMP antibody.