

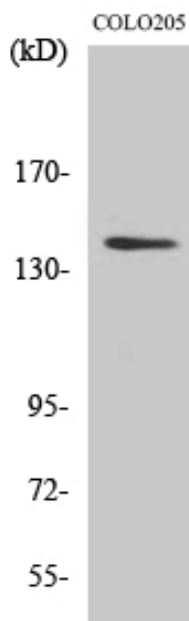


# RGAG1 Polyclonal Antibody

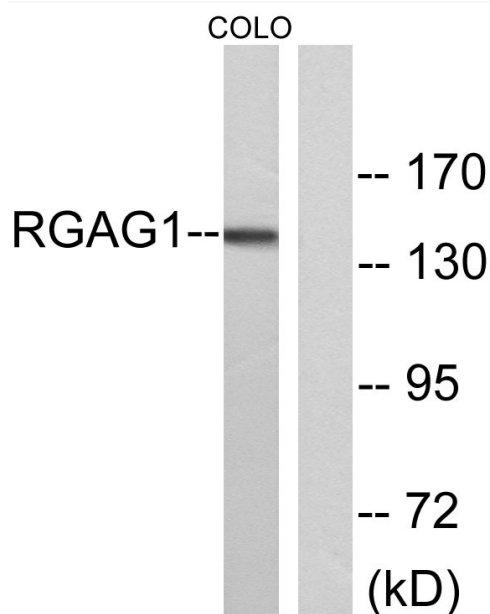
<b>Catalog No</b>	YP-Ab-01981
<b>Isotype</b>	IgG
<b>Reactivity</b>	Human;Mouse
<b>Applications</b>	WB;ELISA
<b>Gene Name</b>	RGAG1
<b>Protein Name</b>	Retrotransposon gag domain-containing protein 1
<b>Immunogen</b>	The antiserum was produced against synthesized peptide derived from human RGAG1. AA range:1331-1380
<b>Specificity</b>	RGAG1 Polyclonal Antibody detects endogenous levels of RGAG1 protein.
<b>Formulation</b>	Liquid in PBS containing 50% glycerol, 0.5% BSA and 0.02% sodium azide.
<b>Source</b>	Polyclonal, Rabbit,IgG
<b>Purification</b>	The antibody was affinity-purified from rabbit antiserum by affinity-chromatography using epitope-specific immunogen.
<b>Dilution</b>	Western Blot: 1/500 - 1/2000. ELISA: 1/40000. Not yet tested in other applications.
<b>Concentration</b>	1 mg/ml
<b>Purity</b>	≥90%
<b>Storage Stability</b>	-20°C/1 year
<b>Synonyms</b>	RGAG1; KIAA1318; Retrotransposon gag domain-containing protein 1; Tumor antigen BJ-HCC-23
<b>Observed Band</b>	144kD
<b>Cell Pathway</b>	
<b>Tissue Specificity</b>	Brain,Carcinoma,
<b>Function</b>	
<b>Background</b>	RGAG1 (Retrotransposon Gag Domain Containing 1) is a Protein Coding gene. Diseases associated with RGAG1 include non-syndromic x-linked intellectual disability.
<b>matters needing attention</b>	Avoid repeated freezing and thawing!
<b>Usage suggestions</b>	This product can be used in immunological reaction related experiments. For more information, please consult technical personnel.



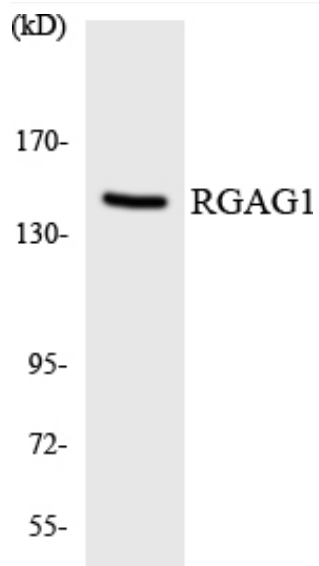
## Products Images



Western Blot analysis of various cells using RGAG1 Polyclonal Antibody



Western blot analysis of lysates from COLO cells, using RGAG1 Antibody. The lane on the right is blocked with the synthesized peptide.



Western blot analysis of the lysates from HT-29 cells using RGAG1 antibody.