



PRIM1 Polyclonal Antibody

Catalog No	YP-Ab-01958
Isotype	IgG
Reactivity	Human;Mouse;Rat
Applications	WB;IHC;IF;ELISA
Gene Name	PRIM1
Protein Name	DNA primase small subunit
Immunogen	The antiserum was produced against synthesized peptide derived from human PRIM1. AA range:371-420
Specificity	PRIM1 Polyclonal Antibody detects endogenous levels of PRIM1 protein.
Formulation	Liquid in PBS containing 50% glycerol, 0.5% BSA and 0.02% sodium azide.
Source	Polyclonal, Rabbit,IgG
Purification	The antibody was affinity-purified from rabbit antiserum by affinity-chromatography using epitope-specific immunogen.
Dilution	WB: 1/500 - 1/2000. IHC: 1/100 - 1/300. ELISA: 1/10000.. IF 1:50-200
Concentration	1 mg/ml
Purity	≥90%
Storage Stability	-20°C/1 year
Synonyms	PRIM1; DNA primase small subunit; DNA primase 49 kDa subunit; p49
Observed Band	50kD
Cell Pathway	nucleoplasm,alpha DNA polymerase:primase complex,membrane,primosome complex,
Tissue Specificity	Bone marrow,Thymus,
Function	function:DNA primase is the polymerase that synthesizes small RNA primers for the Okazaki fragments made during discontinuous DNA replication.,miscellaneous:The bound zinc ion is not a cofactor. It is bound to a zinc knuckle motif that may be involved in sequence recognition and the binding of ssDNA.,similarity:Belongs to the eukaryotic-type primase small subunit family.,subunit:Heterodimer of a small subunit and a large subunit.,
Background	The replication of DNA in eukaryotic cells is carried out by a complex chromosomal replication apparatus, in which DNA polymerase alpha and primase are two key enzymatic components. Primase, which is a heterodimer of a small subunit and a large subunit, synthesizes small RNA primers for the Okazaki fragments made during discontinuous DNA replication. The protein encoded by this gene is the small, 49 kDa primase subunit. [provided by RefSeq, Jul 2008],



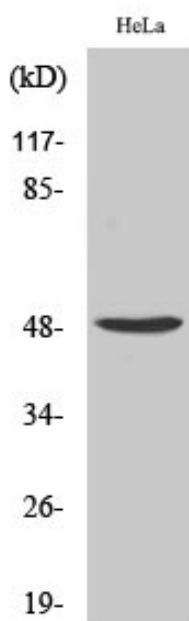
matters needing attention

Avoid repeated freezing and thawing!

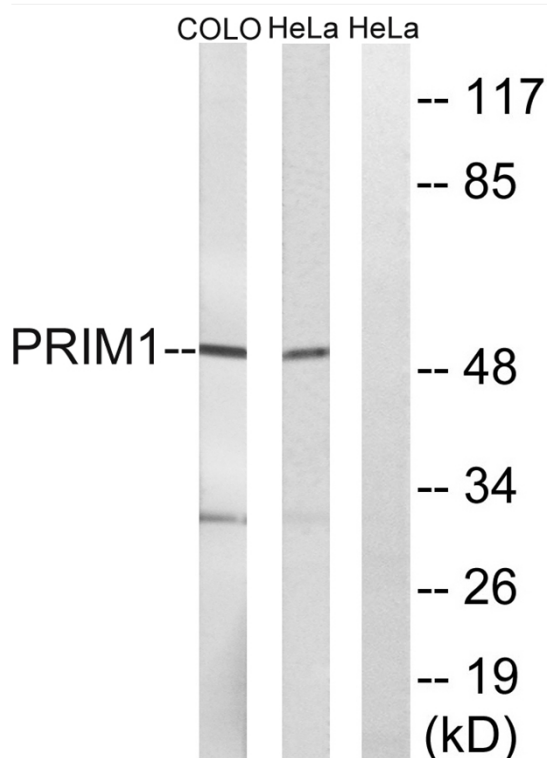
Usage suggestions

This product can be used in immunological reaction related experiments. For more information, please consult technical personnel.

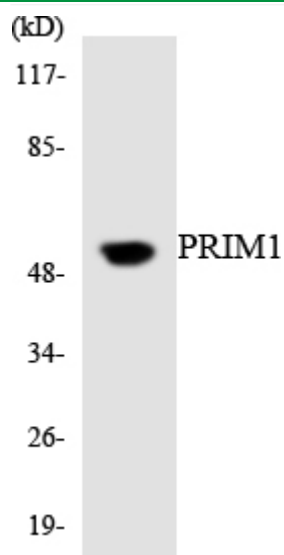
Products Images



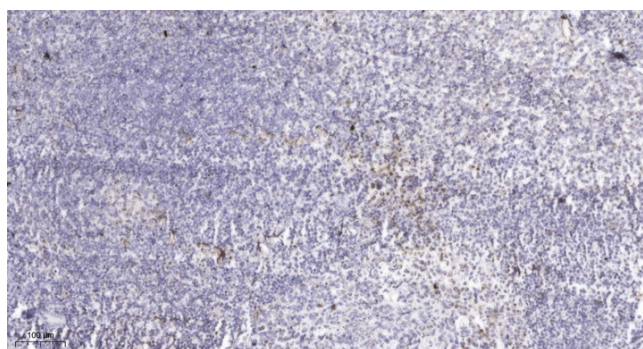
Western Blot analysis of various cells using PRIM1 Polyclonal Antibody cells nucleus extracted by Minute TM Cytoplasmic and Nuclear Fractionation kit (SC-003, Invent biotech, MN, USA).



Western blot analysis of lysates from COLO and HeLa cells, using PRIM1 Antibody. The lane on the right is blocked with the synthesized peptide.



Western blot analysis of the lysates from K562 cells using PRIM1 antibody.



Immunohistochemical analysis of paraffin-embedded human tonsil. 1, Antibody was diluted at 1:200(4° overnight). 2, Tris-EDTA, pH9.0 was used for antigen retrieval. 3, Secondary antibody was diluted at 1:200(room temperature, 45min).