



ODC Polyclonal Antibody

Catalog No	YP-Ab-01927
Isotype	IgG
Reactivity	Human;Mouse;Rat
Applications	WB;IHC;IF;ELISA
Gene Name	SLC25A21
Protein Name	Mitochondrial 2-oxodicarboxylate carrier
Immunogen	The antiserum was produced against synthesized peptide derived from human SLC25A21. AA range:134-183
Specificity	ODC Polyclonal Antibody detects endogenous levels of ODC protein.
Formulation	Liquid in PBS containing 50% glycerol, 0.5% BSA and 0.02% sodium azide.
Source	Polyclonal, Rabbit,IgG
Purification	The antibody was affinity-purified from rabbit antiserum by affinity-chromatography using epitope-specific immunogen.
Dilution	WB: 1/500 - 1/2000. IHC: 1/100 - 1/300. ELISA: 1/40000.. IF 1:50-200
Concentration	1 mg/ml
Purity	≥90%
Storage Stability	-20°C/1 year
Synonyms	SLC25A21; ODC; Mitochondrial 2-oxodicarboxylate carrier; Solute carrier family 25 member 21
Observed Band	36kD
Cell Pathway	Mitochondrion inner membrane; Multi-pass membrane protein.
Tissue Specificity	Expressed in placenta, gall bladder and colon.
Function	function:Transports C5-C7 oxodicarboxylates across the inner membranes of mitochondria. Can transport 2-oxoadipate, 2-oxoglutarate, adipate, glutarate, and to a lesser extent, pimelate, 2-oxopimelate, 2-aminoadipate, oxaloacetate, and citrate.,similarity:Belongs to the mitochondrial carrier family.,similarity:Contains 3 Solcar repeats.,tissue specificity:Ubiquitous.,
Background	SLC25A21 is a homolog of the <i>S. cerevisiae</i> ODC proteins, mitochondrial carriers that transport C5-C7 oxodicarboxylates across inner mitochondrial membranes. One of the species transported by ODC is 2-oxoadipate, a common intermediate in the catabolism of lysine, tryptophan, and hydroxylysine in mammals. Within mitochondria, 2-oxoadipate is converted into acetyl-CoA.[supplied by OMIM, Apr 2004],



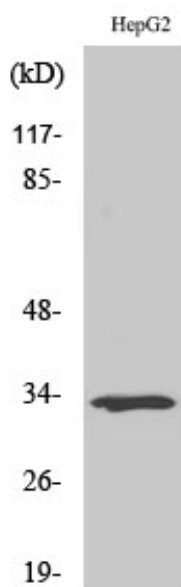
matters needing attention

Avoid repeated freezing and thawing!

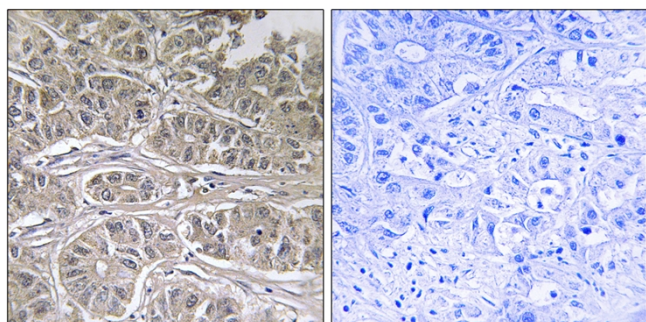
Usage suggestions

This product can be used in immunological reaction related experiments. For more information, please consult technical personnel.

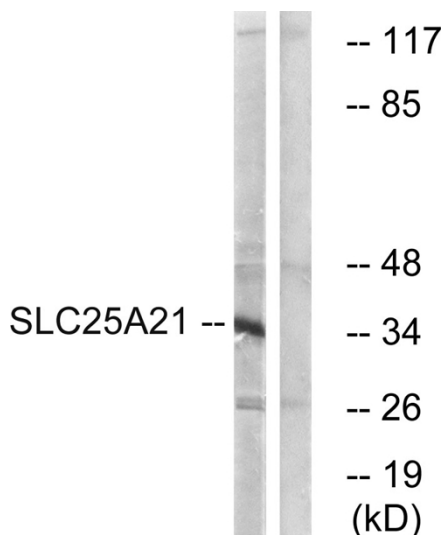
Products Images



Western Blot analysis of various cells using ODC Polyclonal Antibody



Immunohistochemistry analysis of paraffin-embedded human liver carcinoma tissue, using SLC25A21 Antibody. The picture on the right is blocked with the synthesized peptide.



Western blot analysis of lysates from HepG2 cells, using SLC25A21 Antibody. The lane on the right is blocked with the synthesized peptide.