



NF-1 Polyclonal Antibody

Catalog No	YP-Ab-01896
Isotype	IgG
Reactivity	Human;Mouse;Rat
Applications	WB;IHC;IF;ELISA
Gene Name	NFIA
Protein Name	Nuclear factor 1 A-type
Immunogen	The antiserum was produced against synthesized peptide derived from human Nuclear Factor 1. AA range:11-60
Specificity	NF-1 Polyclonal Antibody detects endogenous levels of NF-1 protein.
Formulation	Liquid in PBS containing 50% glycerol, 0.5% BSA and 0.02% sodium azide.
Source	Polyclonal, Rabbit,IgG
Purification	The antibody was affinity-purified from rabbit antiserum by affinity-chromatography using epitope-specific immunogen.
Dilution	WB: 1/500 - 1/2000. IHC: 1/100 - 1/300. ELISA: 1/20000.. IF 1:50-200
Concentration	1 mg/ml
Purity	≥90%
Storage Stability	-20°C/1 year
Synonyms	NFIA; KIAA1439; Nuclear factor 1 A-type; NF1-A; Nuclear factor 1/A; CCAAT-box-binding transcription factor; CTF; Nuclear factor I/A; NF-I/A; NF1-A; TGGCA-binding protein; NFIB; Nuclear factor 1 B-type; NF1-B; Nuclear factor 1/B; CCAAT-box-b
Observed Band	55kD
Cell Pathway	Nucleus.
Tissue Specificity	Brain,Epithelium,Skeletal muscle,Testis,
Function	function:Recognizes and binds the palindromic sequence 5'-TTGGCNNNNNGCCAA-3' present in viral and cellular promoters and in the origin of replication of adenovirus type 2. These proteins are individually capable of activating transcription and replication.,PTM:Phosphorylated upon DNA damage, probably by ATM or ATR.,similarity:Belongs to the CTF/NF-I family.,similarity:Contains 1 CTF/NF-I DNA-binding domain.,subunit:Binds DNA as a homodimer.,
Background	This gene encodes a member of the NF1 (nuclear factor 1) family of transcription factors. Multiple transcript variants encoding different isoforms have been found for this gene. [provided by RefSeq, Sep 2011],



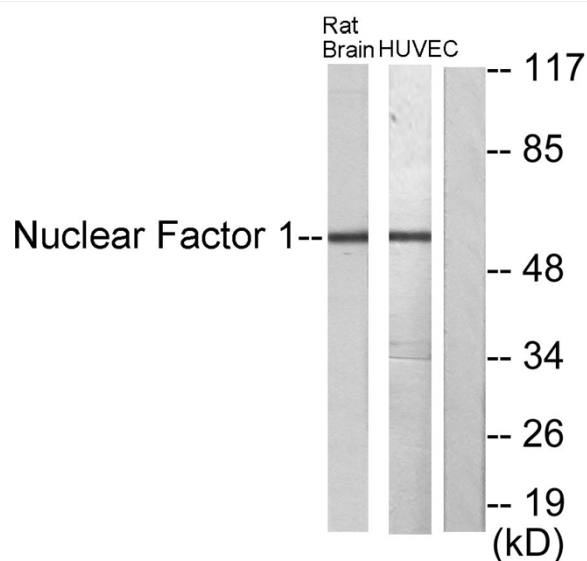
matters needing attention

Avoid repeated freezing and thawing!

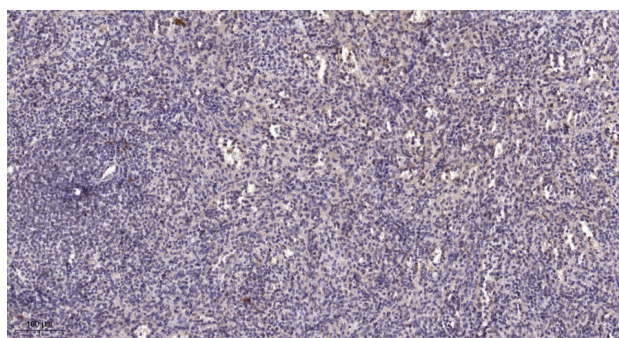
Usage suggestions

This product can be used in immunological reaction related experiments. For more information, please consult technical personnel.

Products Images



Western blot analysis of lysates from rat brain and HUVEC cells, using Nuclear Factor 1 Antibody. The lane on the right is blocked with the synthesized peptide.



Immunohistochemical analysis of paraffin-embedded human spleen. 1, Tris-EDTA, pH9.0 was used for antigen retrieval. 2 Antibody was diluted at 1:200 (4° overnight). 3, Secondary antibody was diluted at 1:200 (room temperature, 45min).