



# Neuronal PAS1 Polyclonal Antibody

<b>Catalog No</b>	YP-Ab-01895
<b>Isotype</b>	IgG
<b>Reactivity</b>	Human;Rat;Mouse;
<b>Applications</b>	WB;IHC
<b>Gene Name</b>	NPAS1
<b>Protein Name</b>	Neuronal PAS domain-containing protein 1
<b>Immunogen</b>	The antiserum was produced against synthesized peptide derived from human NPAS1. AA range:445-494
<b>Specificity</b>	Neuronal PAS1 Polyclonal Antibody detects endogenous levels of Neuronal PAS1 protein.
<b>Formulation</b>	Liquid in PBS containing 50% glycerol, 0.5% BSA and 0.02% sodium azide.
<b>Source</b>	Polyclonal, Rabbit,IgG
<b>Purification</b>	The antibody was affinity-purified from rabbit antiserum by affinity-chromatography using epitope-specific immunogen.
<b>Dilution</b>	WB 1:500-2000;IHC-p 1:50-300
<b>Concentration</b>	1 mg/ml
<b>Purity</b>	≥90%
<b>Storage Stability</b>	-20°C/1 year
<b>Synonyms</b>	NPAS1; BHLHE11; MOP5; PASD5; Neuronal PAS domain-containing protein 1; Neuronal PAS1; Basic-helix-loop-helix-PAS protein MOP5; Class E basic helix-loop-helix protein 11; bHLHe11; Member of PAS protein 5; PAS domain-containing protein 5
<b>Observed Band</b>	62kD
<b>Cell Pathway</b>	Nucleus .
<b>Tissue Specificity</b>	Brain,Fetal brain,Hepatoma,
<b>Function</b>	function:May control regulatory pathways relevant to schizophrenia and to psychotic illness. May play a role in late central nervous system development by modulating EPO expression in response to cellular oxygen level.,similarity:Contains 1 basic helix-loop-helix (bHLH) domain.,similarity:Contains 1 PAC (PAS-associated C-terminal) domain.,similarity:Contains 2 PAS (PER-ARNT-SIM) domains.,subunit:Efficient DNA binding requires dimerization with another bHLH protein. Interacts with ARNT.,
<b>Background</b>	The protein encoded by this gene is a member of the basic helix-loop-helix (bHLH)-PAS family of transcription factors. Studies of a related mouse gene



suggest that it functions in neurons. The exact function of this gene is unclear, but it may play protective or modulatory roles during late embryogenesis and postnatal development. [provided by RefSeq, Jul 2008],

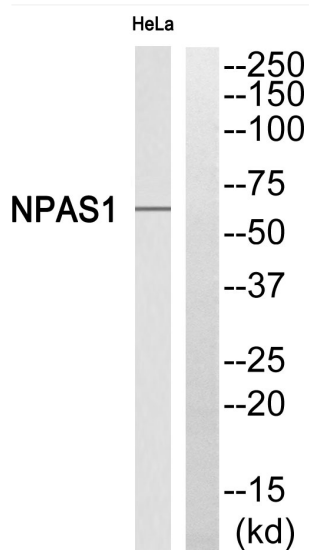
#### matters needing attention

Avoid repeated freezing and thawing!

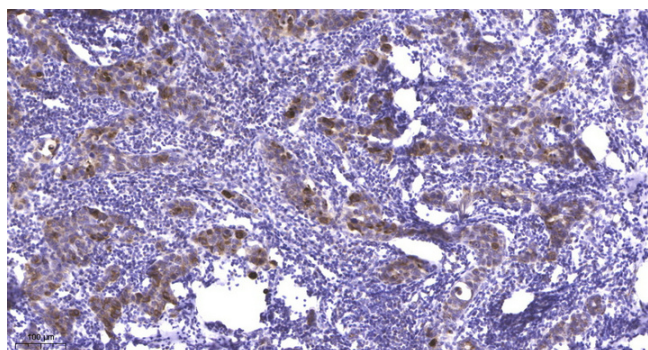
#### Usage suggestions

This product can be used in immunological reaction related experiments. For more information, please consult technical personnel.

### Products Images



Western blot analysis of NPAS1 Antibody. The lane on the right is blocked with the NPAS1 peptide.



Immunohistochemical analysis of paraffin-embedded human Breast cancer. 1, Antibody was diluted at 1:200(4° overnight). 2, Tris-EDTA,pH9.0 was used for antigen retrieval. 3,Secondary antibody was diluted at 1:200(room temperature, 45min).