



NEIL3 Polyclonal Antibody

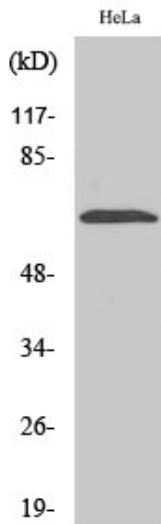
Catalog No	YP-Ab-01893
Isotype	IgG
Reactivity	Human;Mouse
Applications	WB;IHC;IF;ELISA
Gene Name	NEIL3
Protein Name	Endonuclease 8-like 3
Immunogen	The antiserum was produced against synthesized peptide derived from human NEIL3. AA range:491-540
Specificity	NEIL3 Polyclonal Antibody detects endogenous levels of NEIL3 protein.
Formulation	Liquid in PBS containing 50% glycerol, 0.5% BSA and 0.02% sodium azide.
Source	Polyclonal, Rabbit,IgG
Purification	The antibody was affinity-purified from rabbit antiserum by affinity-chromatography using epitope-specific immunogen.
Dilution	WB: 1/500 - 1/2000. IHC: 1/100 - 1/300. ELISA: 1/40000.. IF 1:50-200
Concentration	1 mg/ml
Purity	≥90%
Storage Stability	-20°C/1 year
Synonyms	NEIL3; Endonuclease 8-like 3; DNA glycosylase FPG2; DNA glycosylase/AP lyase Neil3; Endonuclease VIII-like 3; Nei-like protein 3
Observed Band	35kD
Cell Pathway	Nucleus . Chromosome . Recruited to replication stress sites via interaction with ubiquitinated CMG helicase. .
Tissue Specificity	Expressed in keratinocytes and embryonic fibroblasts (at protein level). Also detected in thymus, testis and fetal lung primary fibroblasts.
Function	function:Reports about DNA glycosylase activity are contradictory. The protein lacks a proline residue at the N-terminus that is the active site residue found in the other members of the FPG family.,similarity:Belongs to the FPG family.,similarity:Contains 1 FPG-type zinc finger.,similarity:Contains 1 RanBP2-type zinc finger.,tissue specificity:Detected in thymus and testis.,
Background	NEIL3 belongs to a class of DNA glycosylases homologous to the bacterial Fpg/Nei family. These glycosylases initiate the first step in base excision repair by cleaving bases damaged by reactive oxygen species and introducing a DNA strand break via the associated lyase reaction (Bandaru et al., 2002 [PubMed 12509226]).[supplied by OMIM, Mar 2008],
matters needing attention	Avoid repeated freezing and thawing!



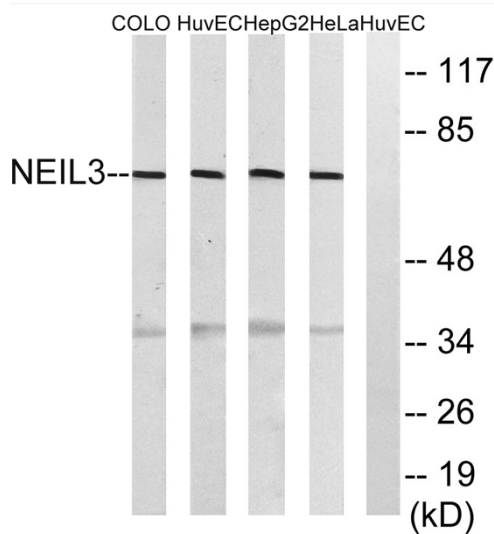
Usage suggestions

This product can be used in immunological reaction related experiments. For more information, please consult technical personnel.

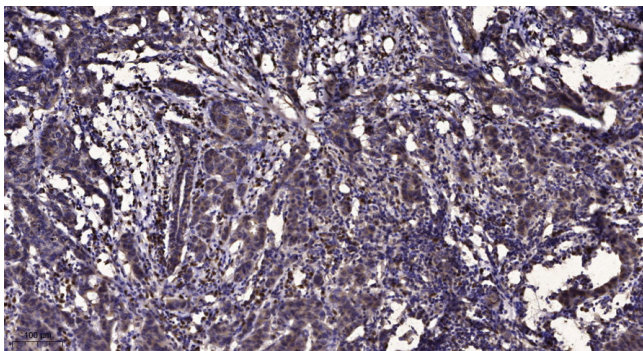
Products Images



Western Blot analysis of various cells using NEIL3 Polyclonal Antibody diluted at 1:2000 cells nucleus extracted by Minute TM Cytoplasmic and Nuclear Fractionation kit (SC-003, Inventbiotech, MN, USA).



Western blot analysis of lysates from HeLa, HepG2, HUVEC, and COLO cells, using NEIL3 Antibody. The lane on the right is blocked with the synthesized peptide.



Immunohistochemical analysis of paraffin-embedded human Breast cancer. 1, Antibody was diluted at 1:200 (4° overnight). 2, Tris-EDTA, pH 9.0 was used for antigen retrieval. 3, Secondary antibody was diluted at 1:200 (room temperature, 45 min).