



MZF-1 Polyclonal Antibody

Catalog No	YP-Ab-01888
Isotype	IgG
Reactivity	Human;Rat;Mouse;
Applications	WB;IHC;IF;ELISA
Gene Name	MZF1
Protein Name	Myeloid zinc finger 1
Immunogen	The antiserum was produced against synthesized peptide derived from human MZF-1. AA range:1-50
Specificity	MZF-1 Polyclonal Antibody detects endogenous levels of MZF-1 protein.
Formulation	Liquid in PBS containing 50% glycerol, 0.5% BSA and 0.02% sodium azide.
Source	Polyclonal, Rabbit,IgG
Purification	The antibody was affinity-purified from rabbit antiserum by affinity-chromatography using epitope-specific immunogen.
Dilution	WB: 1/500 - 1/2000. IHC: 1/100 - 1/300. ELISA: 1/10000.. IF 1:50-200
Concentration	1 mg/ml
Purity	≥90%
Storage Stability	-20°C/1 year
Synonyms	MZF1; MZF; ZNF42; ZSCAN6; Myeloid zinc finger 1; MZF-1; Zinc finger and SCAN domain-containing protein 6; Zinc finger protein 42
Observed Band	82kD
Cell Pathway	Nucleus.
Tissue Specificity	Preferentially expressed in differentiating myeloid cells. Detected in osteoblasts.
Function	function:May be one regulator of transcriptional events during hemopoietic development.,induction:By retinoic acid.,similarity:Belongs to the krueppel C2H2-type zinc-finger protein family.,similarity:Contains 1 SCAN box domain.,similarity:Contains 13 C2H2-type zinc fingers.,tissue specificity:Preferentially expressed in differentiating myeloid cells.,
Background	function:May be one regulator of transcriptional events during hemopoietic development.,induction:By retinoic acid.,similarity:Belongs to the krueppel C2H2-type zinc-finger protein family.,similarity:Contains 1 SCAN box domain.,similarity:Contains 13 C2H2-type zinc fingers.,tissue specificity:Preferentially expressed in differentiating myeloid cells.,
matters needing attention	Avoid repeated freezing and thawing!



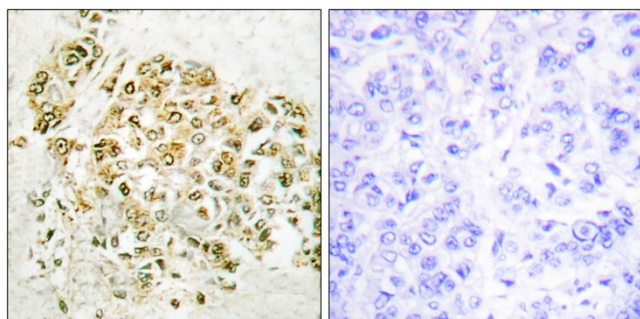
Usage suggestions

This product can be used in immunological reaction related experiments. For more information, please consult technical personnel.

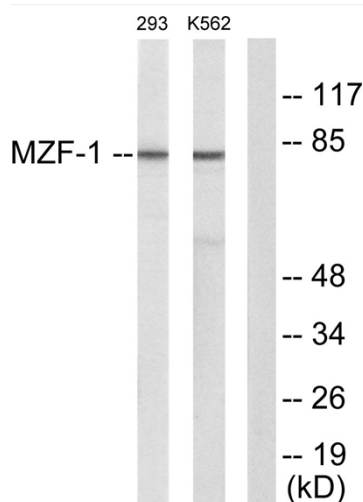
Products Images



Western Blot analysis of various cells using MZF-1 Polyclonal Antibody diluted at 1:2000 cells nucleus extracted by Minute TM Cytoplasmic and Nuclear Fractionation kit (SC-003, Inventbiotech, MN, USA).



Immunohistochemistry analysis of paraffin-embedded human breast carcinoma tissue, using MZF-1 Antibody. The picture on the right is blocked with the synthesized peptide.



Western blot analysis of lysates from 293 and K562 cells, using MZF-1 Antibody. The lane on the right is blocked with the synthesized peptide.