



MRRF Polyclonal Antibody

Catalog No	YP-Ab-01877
Isotype	IgG
Reactivity	Human;Mouse;Rat
Applications	WB;IHC;IF;ELISA
Gene Name	MRRF
Protein Name	Ribosome-recycling factor mitochondrial
Immunogen	The antiserum was produced against synthesized peptide derived from human MRRF. AA range:181-230
Specificity	MRRF Polyclonal Antibody detects endogenous levels of MRRF protein.
Formulation	Liquid in PBS containing 50% glycerol, 0.5% BSA and 0.02% sodium azide.
Source	Polyclonal, Rabbit,IgG
Purification	The antibody was affinity-purified from rabbit antiserum by affinity-chromatography using epitope-specific immunogen.
Dilution	WB: 1/500 - 1/2000. IHC: 1/100 - 1/300. ELISA: 1/20000.. IF 1:50-200
Concentration	1 mg/ml
Purity	≥90%
Storage Stability	-20°C/1 year
Synonyms	MRRF; Ribosome-recycling factor; mitochondrial; RRF; Ribosome-releasing factor, mitochondrial
Observed Band	28kD
Cell Pathway	Mitochondrion .
Tissue Specificity	Lung,Placenta,
Function	function:Responsible for the release of ribosomes from messenger RNA at the termination of protein biosynthesis. May increase the efficiency of translation by recycling ribosomes from one round of translation to another.,similarity:Belongs to the RRF family.,
Background	This gene encodes a ribosome recycling factor, which is a component of the mitochondrial translational machinery. The encoded protein, along with mitochondrial elongation factor 2, functions in ribosomal recycling at the termination of mitochondrial translation by mediating the disassembly of ribosomes from messenger RNA. A pseudogene of this gene has been identified on chromosome X. [provided by RefSeq, Oct 2016],
matters needing attention	Avoid repeated freezing and thawing!



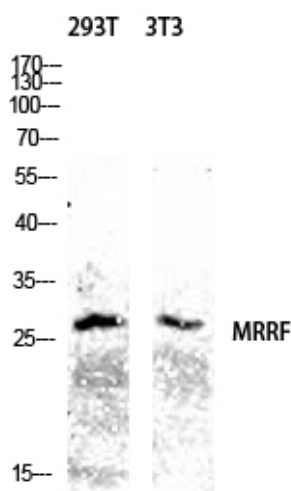
Usage suggestions

This product can be used in immunological reaction related experiments. For more information, please consult technical personnel.

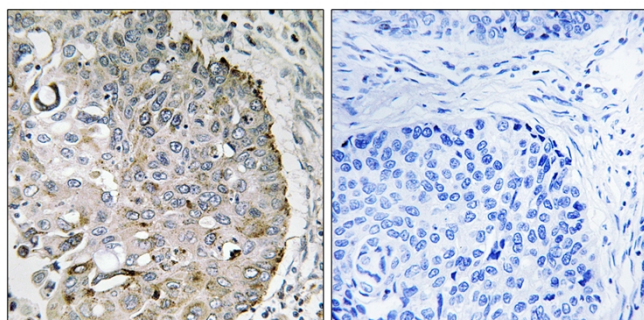
Products Images



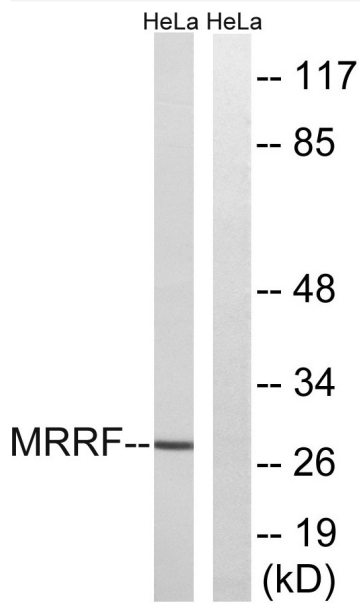
Western Blot analysis of various cells using MRRF Polyclonal Antibody diluted at 1:1000



Western blot analysis of 293T 3T3 lysis using MRRF antibody. Antibody was diluted at 1:1000



Immunohistochemistry analysis of paraffin-embedded human lung carcinoma tissue, using MRRF Antibody. The picture on the right is blocked with the synthesized peptide.



Western blot analysis of lysates from HeLa cells, using MRRF Antibody. The lane on the right is blocked with the synthesized peptide.