



MOF Polyclonal Antibody

Catalog No	YP-Ab-01875
Isotype	IgG
Reactivity	Human;Mouse;Rat
Applications	IHC;IF;ELISA
Gene Name	KAT8
Protein Name	Histone acetyltransferase KAT8
Immunogen	The antiserum was produced against synthesized peptide derived from human MYST1. AA range:101-150
Specificity	MOF Polyclonal Antibody detects endogenous levels of MOF protein.
Formulation	Liquid in PBS containing 50% glycerol, 0.5% BSA and 0.02% sodium azide.
Source	Polyclonal, Rabbit,IgG
Purification	The antibody was affinity-purified from rabbit antiserum by affinity-chromatography using epitope-specific immunogen.
Dilution	IHC: 1/100 - 1/300. ELISA: 1/10000.. IF 1:50-200
Concentration	1 mg/ml
Purity	≥90%
Storage Stability	-20°C/1 year
Synonyms	KAT8; MOF; MYST1; PP7073; Histone acetyltransferase KAT8; Lysine acetyltransferase 8; MOZ; YBF2/SAS3, SAS2 and TIP60 protein 1; MYST-1; hMOF
Observed Band	
Cell Pathway	Nucleus . Chromosome .
Tissue Specificity	Brain,Embryo,Heart,Uterus,
Function	catalytic activity:Acetyl-CoA + histone = CoA + acetylhistone.,function:Histone acetyltransferase which may be involved in transcriptional activation. May influence the function of ATM.,similarity:Belongs to the MYST (SAS/MOZ) family.,similarity:Contains 1 C2HC-type zinc finger.,similarity:Contains 1 chromo domain.,subunit:Component of a multisubunit histone acetyltransferase complex (MSL) at least composed of the MOF/MYST1, MSL1/hampin, MSL2L1 and MSL3L1. Interacts with the chromodomain of MORF4L1/MRG15. Interacts with ATM through the chromodomain.,
Background	This gene encodes a member of the MYST histone acetylase protein family. The encoded protein has a characteristic MYST domain containing an acetyl-CoA-binding site, a chromodomain typical of proteins which bind histones, and a C2HC-type zinc finger. Multiple transcript variants encoding different

isoforms have been found for this gene. [provided by RefSeq, Feb 2012],

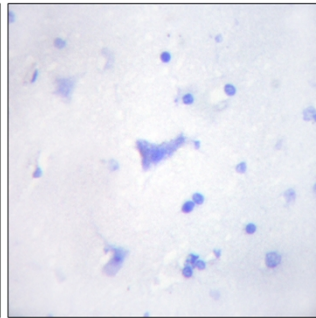
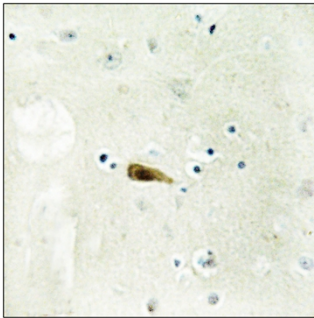
matters needing attention

Avoid repeated freezing and thawing!

Usage suggestions

This product can be used in immunological reaction related experiments. For more information, please consult technical personnel.

Products Images



Immunohistochemistry analysis of paraffin-embedded human brain tissue, using MYST1 Antibody. The picture on the right is blocked with the synthesized peptide.