



# MEF-2B Polyclonal Antibody

<b>Catalog No</b>	YP-Ab-01865
<b>Isotype</b>	IgG
<b>Reactivity</b>	Human;Mouse
<b>Applications</b>	WB;IHC;IF;ELISA
<b>Gene Name</b>	MEF2B
<b>Protein Name</b>	Myocyte-specific enhancer factor 2B
<b>Immunogen</b>	The antiserum was produced against synthesized peptide derived from human MEF2B. AA range:51-100
<b>Specificity</b>	MEF-2B Polyclonal Antibody detects endogenous levels of MEF-2B protein.
<b>Formulation</b>	Liquid in PBS containing 50% glycerol, 0.5% BSA and 0.02% sodium azide.
<b>Source</b>	Polyclonal, Rabbit,IgG
<b>Purification</b>	The antibody was affinity-purified from rabbit antiserum by affinity-chromatography using epitope-specific immunogen.
<b>Dilution</b>	WB: 1/500 - 1/2000. IHC: 1/100 - 1/300. ELISA: 1/10000.. IF 1:50-200
<b>Concentration</b>	1 mg/ml
<b>Purity</b>	≥90%
<b>Storage Stability</b>	-20°C/1 year
<b>Synonyms</b>	MEF2B; XMEF2; Myocyte-specific enhancer factor 2B; RSRFR2; Serum response factor-like protein 2
<b>Observed Band</b>	38kD
<b>Cell Pathway</b>	Nucleus.
<b>Tissue Specificity</b>	Expressed in skeletal and cardiac muscle and brain.
<b>Function</b>	function:Transcriptional activator which binds specifically to the MEF2 element, 5'-YTA[AT](4)TAR-3', found in numerous muscle-specific genes. Activates transcription via this element. May be involved in muscle-specific and/or growth factor-related transcription.,similarity:Belongs to the MEF2 family.,similarity:Contains 1 MADS-box domain.,similarity:Contains 1 Mef2-type DNA-binding domain.,subunit:Interacts with HDAC7 (By similarity). Heterodimer. Interacts with HDAC9.,tissue specificity:Expressed in skeletal and cardiac muscle and brain.,
<b>Background</b>	This gene represents numerous read-through transcripts that span GenelD:729991 and 100271849. Many read-through transcripts are predicted to be nonsense-mediated decay (NMD) candidates, and are thought to be non-coding. Some transcripts are predicted to be capable of translation reinitiation at a downstream AUG, resulting in expression of at least one isoform of myocyte enhancer factor 2B (MEF2B) from this read-through locus. At least one additional

MEF2B variant and isoform can be expressed from a downstream promoter, and is annotated on GeneID:100271849. [provided by RefSeq, Oct 2010],

**matters needing attention**

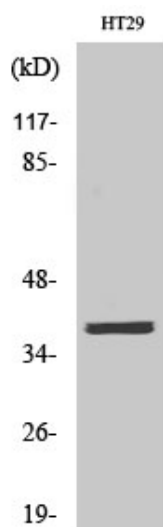
Avoid repeated freezing and thawing!

**Usage suggestions**

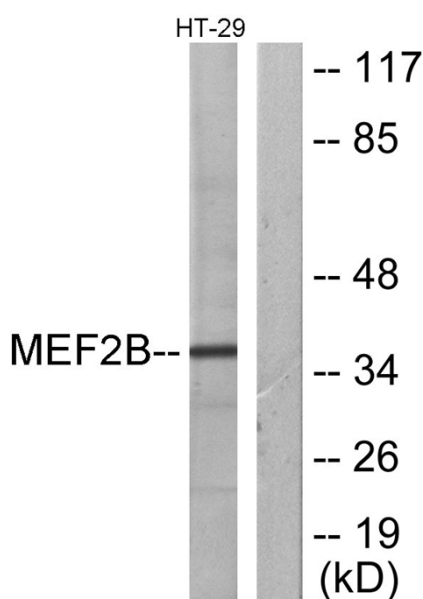
This product can be used in immunological reaction related experiments. For more information, please consult technical personnel.



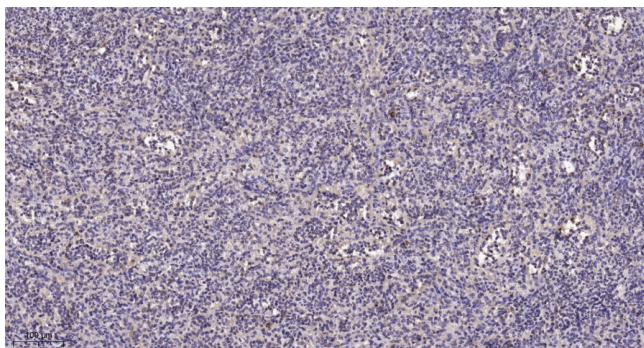
## Products Images



Western Blot analysis of various cells using MEF-2B Polyclonal Antibody cells nucleus extracted by Minute TM Cytoplasmic and Nuclear Fractionation kit (SC-003, Inventbiotech, MN, USA).



Western blot analysis of lysates from HT-29 cells, using MEF2B Antibody. The lane on the right is blocked with the synthesized peptide.



Immunohistochemical analysis of paraffin-embedded human spleen. 1, Tris-EDTA, pH9.0 was used for antigen retrieval. 2 Antibody was diluted at 1:200 (4° overnight). 3, Secondary antibody was diluted at 1:200 (room temperature, 45min).