

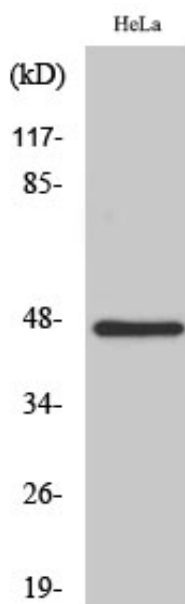


# HSFX1 Polyclonal Antibody

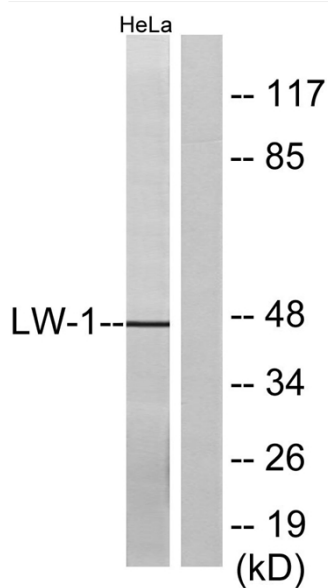
<b>Catalog No</b>	YP-Ab-01819
<b>Isotype</b>	IgG
<b>Reactivity</b>	Human;Rat;Mouse;
<b>Applications</b>	WB;ELISA
<b>Gene Name</b>	HSFX1
<b>Protein Name</b>	Heat shock transcription factor X-linked
<b>Immunogen</b>	The antiserum was produced against synthesized peptide derived from human LW-1. AA range:10-59
<b>Specificity</b>	HSFX1 Polyclonal Antibody detects endogenous levels of HSFX1 protein.
<b>Formulation</b>	Liquid in PBS containing 50% glycerol, 0.5% BSA and 0.02% sodium azide.
<b>Source</b>	Polyclonal, Rabbit,IgG
<b>Purification</b>	The antibody was affinity-purified from rabbit antiserum by affinity-chromatography using epitope-specific immunogen.
<b>Dilution</b>	Western Blot: 1/500 - 1/2000. ELISA: 1/10000. Not yet tested in other applications.
<b>Concentration</b>	1 mg/ml
<b>Purity</b>	≥90%
<b>Storage Stability</b>	-20°C/1 year
<b>Synonyms</b>	HSFX1; LW-1; HSFX2; Heat shock transcription factor; X-linked
<b>Observed Band</b>	47kD
<b>Cell Pathway</b>	Nucleus . Cytoplasm .
<b>Tissue Specificity</b>	Testis-specific.
<b>Function</b>	similarity:Belongs to the HSF family.,tissue specificity:Testis-specific.,
<b>Background</b>	similarity:Belongs to the HSF family.,tissue specificity:Testis-specific.,
<b>matters needing attention</b>	Avoid repeated freezing and thawing!
<b>Usage suggestions</b>	This product can be used in immunological reaction related experiments. For more information, please consult technical personnel.



## Products Images



Western Blot analysis of various cells using HSFX1 Polyclonal Antibody



Western blot analysis of lysates from HeLa cells, using LW-1 Antibody. The lane on the right is blocked with the synthesized peptide.