



HMGB-2 Polyclonal Antibody

Catalog No	YP-Ab-01795
Isotype	IgG
Reactivity	Human;Mouse;Rat
Applications	WB;IHC;IF;ELISA
Gene Name	HMGB2
Protein Name	High mobility group protein B2
Immunogen	The antiserum was produced against synthesized peptide derived from human HMGB2. AA range:131-180
Specificity	HMGB-2 Polyclonal Antibody detects endogenous levels of HMGB-2 protein.
Formulation	Liquid in PBS containing 50% glycerol, 0.5% BSA and 0.02% sodium azide.
Source	Polyclonal, Rabbit,IgG
Purification	The antibody was affinity-purified from rabbit antiserum by affinity-chromatography using epitope-specific immunogen.
Dilution	Western Blot: 1/500 - 1/2000. Immunohistochemistry: 1/100 - 1/300. Immunofluorescence: 1/200 - 1/1000. ELISA: 1/10000. Not yet tested in other applications.
Concentration	1 mg/ml
Purity	≥90%
Storage Stability	-20°C/1 year
Synonyms	HMGB2; HMGB2; High mobility group protein B2; High mobility group protein 2; HMGB-2
Observed Band	27kD
Cell Pathway	Nucleus . Chromosome . Cytoplasm . Secreted . In basal state predominantly nuclear. .
Tissue Specificity	Expressed in gastric and intestinal tissues (at protein level).
Function	function: Binds preferentially single-stranded DNA and unwinds double stranded DNA.; similarity: Belongs to the HMGB family.; similarity: Contains 2 HMG box DNA-binding domains.; subunit: Component of the SET complex, which also contains SET, ANP32A, APEX1 and NME1. Directly interacts with SET.,
Background	This gene encodes a member of the non-histone chromosomal high mobility group protein family. The proteins of this family are chromatin-associated and ubiquitously distributed in the nucleus of higher eukaryotic cells. In vitro studies have demonstrated that this protein is able to efficiently bend DNA and form DNA circles. These studies suggest a role in facilitating cooperative interactions between cis-acting proteins by promoting DNA flexibility. This protein was also reported to be involved in the final ligation step in DNA end-joining processes of DNA double-strand breaks repair and V(D)J recombination. [provided by RefSeq,



Jul 2008],

matters needing attention

Avoid repeated freezing and thawing!

Usage suggestions

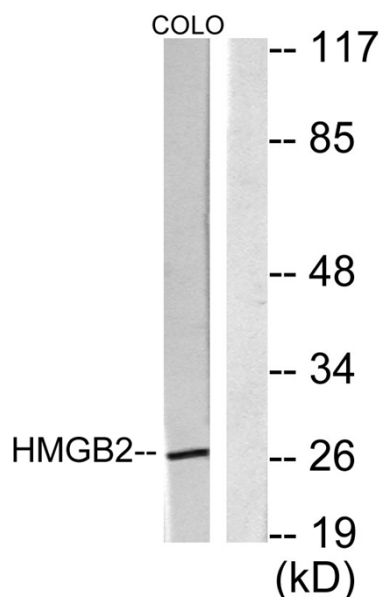
This product can be used in immunological reaction related experiments. For more information, please consult technical personnel.



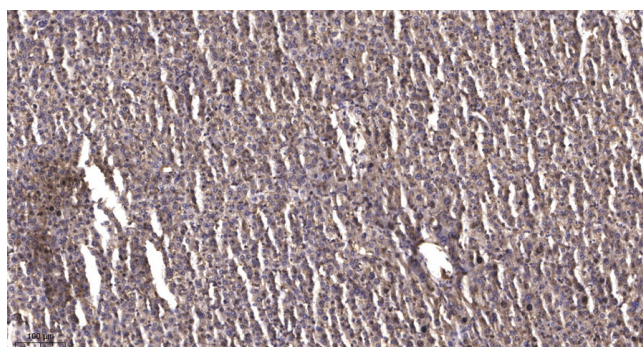
Products Images



Western Blot analysis of various cells using HMG-2 Polyclonal Antibody



Western blot analysis of lysates from COLO205 cells, using HMGB2 Antibody. The lane on the right is blocked with the synthesized peptide.



Immunohistochemical analysis of paraffin-embedded human liver cancer. 1, Antibody was diluted at 1:200(4° overnight). 2, Tris-EDTA,pH9.0 was used for antigen retrieval. 3,Secondary antibody was diluted at 1:200(room temperature, 45min).