



FoxR1 Polyclonal Antibody

Catalog No	YP-Ab-01740
Isotype	IgG
Reactivity	Human;Mouse
Applications	WB;IHC;IF;ELISA
Gene Name	FOXR1
Protein Name	Forkhead box protein R1
Immunogen	The antiserum was produced against synthesized peptide derived from human FOXR1. AA range:231-280
Specificity	FoxR1 Polyclonal Antibody detects endogenous levels of FoxR1 protein.
Formulation	Liquid in PBS containing 50% glycerol, 0.5% BSA and 0.02% sodium azide.
Source	Polyclonal, Rabbit,IgG
Purification	The antibody was affinity-purified from rabbit antiserum by affinity-chromatography using epitope-specific immunogen.
Dilution	WB: 1/500 - 1/2000. IHC: 1/100 - 1/300. ELISA: 1/20000.. IF 1:50-200
Concentration	1 mg/ml
Purity	≥90%
Storage Stability	-20°C/1 year
Synonyms	FOXR1; FOXN5; DLNB13; Forkhead box protein R1; Forkhead box protein N5
Observed Band	35kD
Cell Pathway	Cytoplasm . Cytoplasm, perinuclear region . Located in the cytoplasm of spermatocytes and strongly accumulates at the perinuclear region in elongated spermatids. .
Tissue Specificity	Expressed in testis (at protein level).
Function	similarity:Contains 1 fork-head DNA-binding domain.,
Background	This gene encodes a member of the forkhead box (FOX) family of transcription factors. FOX family members are monomeric, helix-turn-helix proteins with a core DNA-binding domain of approximately 110 aa. Many FOX transcription factors play roles in determining cell fates during early development. This forkhead box protein lacks the C-terminal basic region found in many other FOX family members. It is located within the 11q23.3 region which is commonly deleted in neuroblastomas. [provided by RefSeq, Jul 2008],
matters needing attention	Avoid repeated freezing and thawing!



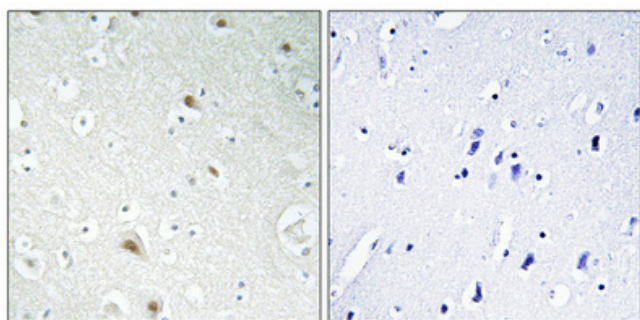
Usage suggestions

This product can be used in immunological reaction related experiments. For more information, please consult technical personnel.

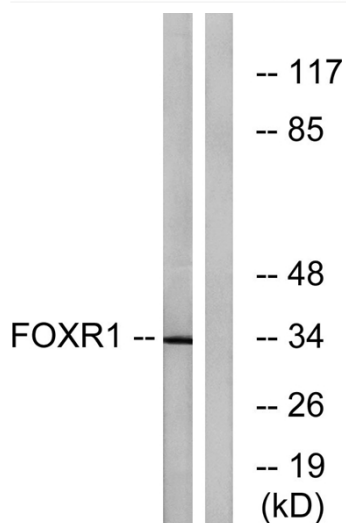
Products Images



Western Blot analysis of various cells using FoxR1 Polyclonal Antibody cells nucleus extracted by Minute TM Cytoplasmic and Nuclear Fractionation kit (SC-003, Inventbiotech, MN, USA).



Immunohistochemical analysis of paraffin-embedded Human brain. Antibody was diluted at 1:100 (4° overnight). High-pressure and temperature Tris-EDTA, pH 8.0 was used for antigen retrieval. Negative control (right) obtained from antibody was pre-absorbed by immunogen peptide.



Western blot analysis of lysates from HeLa cells, using FOXR1 Antibody. The lane on the right is blocked with the synthesized peptide.