

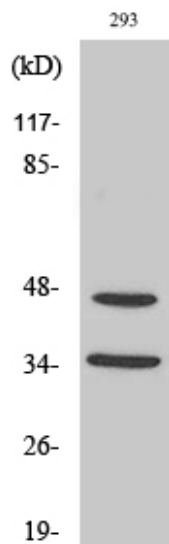


FoxB1/2 Polyclonal Antibody

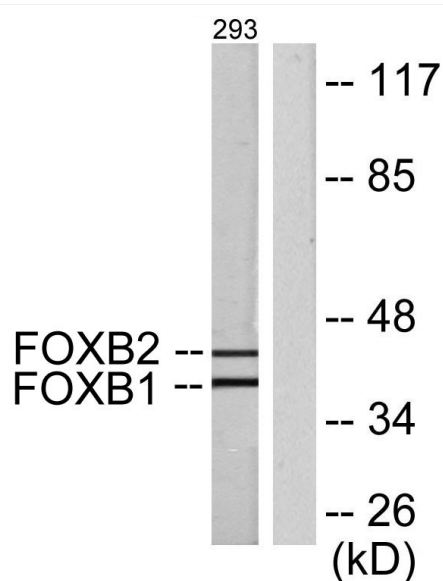
| | |
|----------------------------------|---|
| Catalog No | YP-Ab-01717 |
| Isotype | IgG |
| Reactivity | Human;Mouse |
| Applications | WB;IHC;IF;ELISA |
| Gene Name | FOXB1/FOXB2 |
| Protein Name | Forkhead box protein B1/2 |
| Immunogen | The antiserum was produced against synthesized peptide derived from human FOXB1/2. AA range:51-100 |
| Specificity | FoxB1/2 Polyclonal Antibody detects endogenous levels of FoxB1/2 protein. |
| Formulation | Liquid in PBS containing 50% glycerol, 0.5% BSA and 0.02% sodium azide. |
| Source | Polyclonal, Rabbit,IgG |
| Purification | The antibody was affinity-purified from rabbit antiserum by affinity-chromatography using epitope-specific immunogen. |
| Dilution | WB: 1/500 - 1/2000. IHC: 1/100 - 1/300. ELISA: 1/20000.. IF 1:50-200 |
| Concentration | 1 mg/ml |
| Purity | ≥90% |
| Storage Stability | -20°C/1 year |
| Synonyms | FOXB1; FKH5; Forkhead box protein B1; Transcription factor FKH-5; FOXB2; Forkhead box protein B2 |
| Observed Band | 45kD |
| Cell Pathway | Nucleus . |
| Tissue Specificity | Lung,Placenta, |
| Function | similarity:Contains 1 fork-head DNA-binding domain., |
| Background | similarity:Contains 1 fork-head DNA-binding domain., |
| matters needing attention | Avoid repeated freezing and thawing! |
| Usage suggestions | This product can be used in immunological reaction related experiments. For more information, please consult technical personnel. |



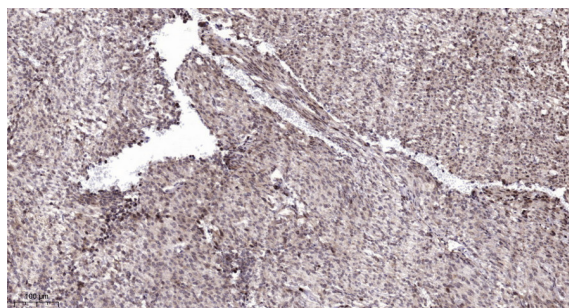
Products Images



Western Blot analysis of various cells using FoxB1/2 Polyclonal Antibody cells nucleus extracted by Minute TM Cytoplasmic and Nuclear Fractionation kit (SC-003, Inventbiotech, MN, USA).



Western blot analysis of lysates from 293 cells, using FOXB1/2 Antibody. The lane on the right is blocked with the synthesized peptide.



Immunohistochemical analysis of paraffin-embedded human Colon cancer. 1, Antibody was diluted at 1:200(4° overnight). 2, Tris-EDTA, pH9.0 was used for antigen retrieval. 3, Secondary antibody was diluted at 1:200(room temperature, 45min).