

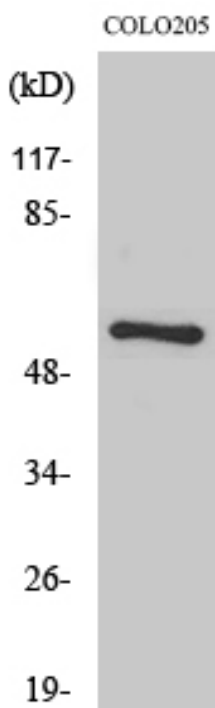


# FBP3 Polyclonal Antibody

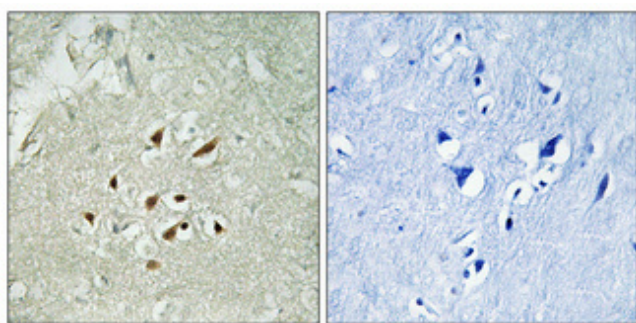
<b>Catalog No</b>	YP-Ab-01708
<b>Isotype</b>	IgG
<b>Reactivity</b>	Human;Mouse;Rat
<b>Applications</b>	WB;IHC;IF;ELISA
<b>Gene Name</b>	FUBP3
<b>Protein Name</b>	Far upstream element-binding protein 3
<b>Immunogen</b>	The antiserum was produced against synthesized peptide derived from human FUBP3. AA range:201-250
<b>Specificity</b>	FBP3 Polyclonal Antibody detects endogenous levels of FBP3 protein.
<b>Formulation</b>	Liquid in PBS containing 50% glycerol, 0.5% BSA and 0.02% sodium azide.
<b>Source</b>	Polyclonal, Rabbit,IgG
<b>Purification</b>	The antibody was affinity-purified from rabbit antiserum by affinity-chromatography using epitope-specific immunogen.
<b>Dilution</b>	WB: 1/500 - 1/2000. IHC: 1/100 - 1/300. ELISA: 1/20000.. IF 1:50-200
<b>Concentration</b>	1 mg/ml
<b>Purity</b>	≥90%
<b>Storage Stability</b>	-20°C/1 year
<b>Synonyms</b>	FUBP3; FBP3; Far upstream element-binding protein 3; FUSE-binding protein 3
<b>Observed Band</b>	60kD
<b>Cell Pathway</b>	Nucleus .
<b>Tissue Specificity</b>	Detected in a number of cell lines.
<b>Function</b>	function:May interact with single-stranded DNA from the far-upstream element (FUSE). May activate gene expression.,PTM:Phosphorylated upon DNA damage, probably by ATM or ATR.,similarity:Contains 4 KH domains.,tissue specificity:Detected in a number of cell lines.,
<b>Background</b>	function:May interact with single-stranded DNA from the far-upstream element (FUSE). May activate gene expression.,PTM:Phosphorylated upon DNA damage, probably by ATM or ATR.,similarity:Contains 4 KH domains.,tissue specificity:Detected in a number of cell lines.,
<b>matters needing attention</b>	Avoid repeated freezing and thawing!
<b>Usage suggestions</b>	This product can be used in immunological reaction related experiments. For more information, please consult technical personnel.



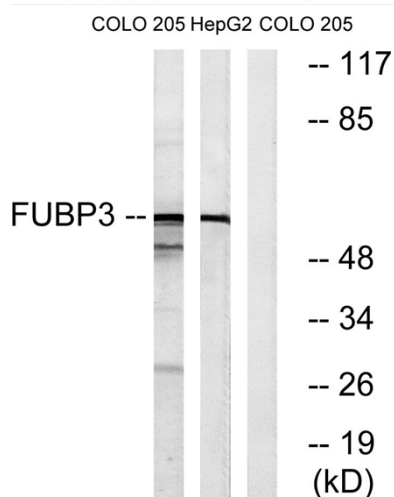
## Products Images



Western Blot analysis of various cells using FBP3 Polyclonal Antibody cells nucleus extracted by Minute TM Cytoplasmic and Nuclear Fractionation kit (SC-003, Inventbiotech, MN, USA).



Immunohistochemical analysis of paraffin-embedded Human brain. Antibody was diluted at 1:100 (4° overnight). High-pressure and temperature Tris-EDTA, pH 8.0 was used for antigen retrieval. Negative control (right) obtained from antibody was pre-absorbed by immunogen peptide.



Western blot analysis of lysates from COLO and HepG2 cells, using FUBP3 Antibody. The lane on the right is blocked with the synthesized peptide.