



# ETO-2 Polyclonal Antibody

<b>Catalog No</b>	YP-Ab-01704
<b>Isotype</b>	IgG
<b>Reactivity</b>	Human;Mouse
<b>Applications</b>	IHC;IF;ELISA
<b>Gene Name</b>	CBFA2T3
<b>Protein Name</b>	Protein CBFA2T3
<b>Immunogen</b>	The antiserum was produced against synthesized peptide derived from human MTG16. AA range:261-310
<b>Specificity</b>	ETO-2 Polyclonal Antibody detects endogenous levels of ETO-2 protein.
<b>Formulation</b>	Liquid in PBS containing 50% glycerol, 0.5% BSA and 0.02% sodium azide.
<b>Source</b>	Polyclonal, Rabbit,IgG
<b>Purification</b>	The antibody was affinity-purified from rabbit antiserum by affinity-chromatography using epitope-specific immunogen.
<b>Dilution</b>	IHC: 1/100 - 1/300. ELISA: 1/20000.. IF 1:50-200
<b>Concentration</b>	1 mg/ml
<b>Purity</b>	≥90%
<b>Storage Stability</b>	-20°C/1 year
<b>Synonyms</b>	CBFA2T3; MTG16; MTGR2; ZMYND4; Protein CBFA2T3; MTG8-related protein 2; Myeloid translocation gene on chromosome 16 protein; hMTG16; Zinc finger MYND domain-containing protein 4
<b>Observed Band</b>	
<b>Cell Pathway</b>	[Isoform 1]: Nucleus, nucleolus. The RUNX1-CBFA2T3 fusion protein localizes to the nucleoplasm.; [Isoform 2]: Nucleus, nucleoplasm . Golgi apparatus membrane .
<b>Tissue Specificity</b>	Widely expressed with higher expression in heart, pancreas, skeletal muscle, spleen, thymus and peripheral blood leukocytes. Expressed in hematopoietic cells (at protein level).
<b>Function</b>	disease:A chromosomal aberration involving CBFA2T3 is found in therapy-related myeloid malignancies. Translocation t(16;21)(q24;q22) that forms a RUNX1-CBFA2T3 fusion protein.,function:Functions as a transcriptional repressor. Regulates the proliferation and the differentiation of erythroid progenitors by repressing the expression of TAL1 target genes. Plays a role in granulocyte differentiation. Isoform 2 functions as an A-kinase-anchoring protein (PubMed:11823486).,induction:Down-regulated by all-trans retinoic acid.,similarity:Belongs to the CBFA2T family.,similarity:Contains 1 MYND-type zinc finger.,similarity:Contains 1 TAFH (NHR1) domain.,subcellular location:The RUNX1-CBFA2T3 fusion protein localizes to the



nucleoplasm..subunit:Component of a TAL-1 complex composed at least of CBFA2T3, LDB1, TAL1 and TCF3 (By similarity). Heterodimer with RUNX1T1 and CBFA2T2. Interacts with ERBB4,

#### Background

This gene encodes a member of the myeloid translocation gene family which interact with DNA-bound transcription factors and recruit a range of corepressors to facilitate transcriptional repression. The t(16;21)(q24;q22) translocation is one of the less common karyotypic abnormalities in acute myeloid leukemia. The translocation produces a chimeric gene made up of the 5'-region of the runt-related transcription factor 1 gene fused to the 3'-region of this gene. This gene is also a putative breast tumor suppressor. Alternative splicing results in transcript variants. [provided by RefSeq, Nov 2010],

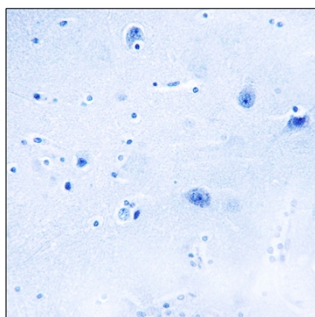
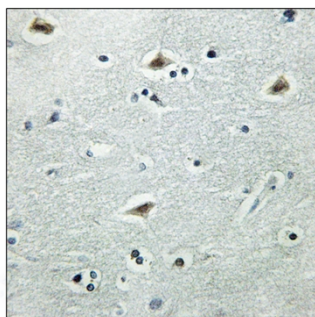
#### matters needing attention

Avoid repeated freezing and thawing!

#### Usage suggestions

This product can be used in immunological reaction related experiments. For more information, please consult technical personnel.

### Products Images



Immunohistochemistry analysis of paraffin-embedded human brain tissue, using MTG16 Antibody. The picture on the right is blocked with the synthesized peptide.