



# EOMES Polyclonal Antibody

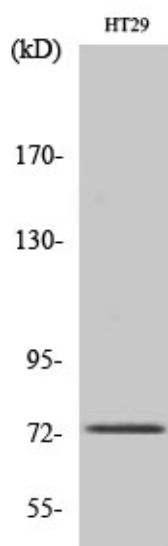
<b>Catalog No</b>	YP-Ab-01696
<b>Isotype</b>	IgG
<b>Reactivity</b>	Human;Mouse
<b>Applications</b>	WB;ELISA
<b>Gene Name</b>	EOMES
<b>Protein Name</b>	Eomesodermin homolog
<b>Immunogen</b>	The antiserum was produced against synthesized peptide derived from human EOMES. AA range:59-108
<b>Specificity</b>	EOMES Polyclonal Antibody detects endogenous levels of EOMES protein.
<b>Formulation</b>	Liquid in PBS containing 50% glycerol, 0.5% BSA and 0.02% sodium azide.
<b>Source</b>	Polyclonal, Rabbit,IgG
<b>Purification</b>	The antibody was affinity-purified from rabbit antiserum by affinity-chromatography using epitope-specific immunogen.
<b>Dilution</b>	Western Blot: 1/500 - 1/2000. ELISA: 1/10000. Not yet tested in other applications.
<b>Concentration</b>	1 mg/ml
<b>Purity</b>	≥90%
<b>Storage Stability</b>	-20°C/1 year
<b>Synonyms</b>	EOMES; TBR2; Eomesodermin homolog; T-box brain protein 2; T-brain-2; TBR-2
<b>Observed Band</b>	73kD
<b>Cell Pathway</b>	Nucleus .
<b>Tissue Specificity</b>	Expressed in CD8+ T-cells.
<b>Function</b>	similarity:Contains 1 T-box DNA-binding domain.,
<b>Background</b>	This gene belongs to the TBR1 (T-box brain protein 1) sub-family of T-box genes that share the common DNA-binding T-box domain. The encoded protein is a transcription factor which is crucial for embryonic development of mesoderm and the central nervous system in vertebrates. The protein may also be necessary for the differentiation of effector CD8+ T cells which are involved in defense against viral infections. A similar gene disrupted in mice is shown to be essential during trophoblast development and gastrulation. Alternative splicing results in multiple transcript variants. [provided by RefSeq, May 2013],
<b>matters needing attention</b>	Avoid repeated freezing and thawing!



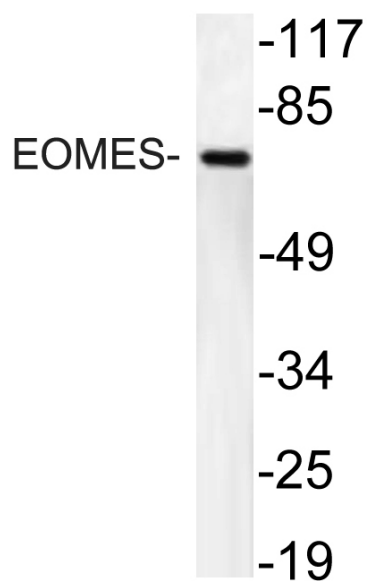
## Usage suggestions

This product can be used in immunological reaction related experiments. For more information, please consult technical personnel.

## Products Images



Western Blot analysis of various cells using EOMES Polyclonal Antibody cells nucleus extracted by Minute TM Cytoplasmic and Nuclear Fractionation kit (SC-003, Inventbiotech, MN, USA).



Western blot analysis of lysate from HT29 cells, using EOMES antibody.