

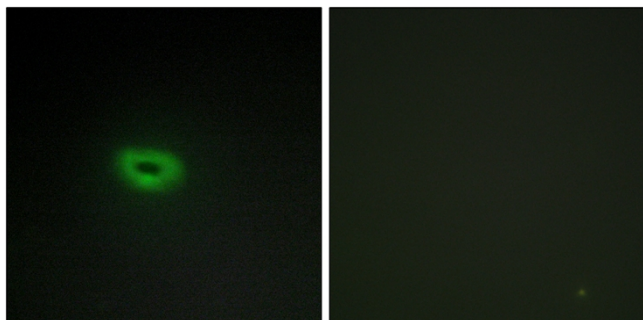


ECRG4 Polyclonal Antibody

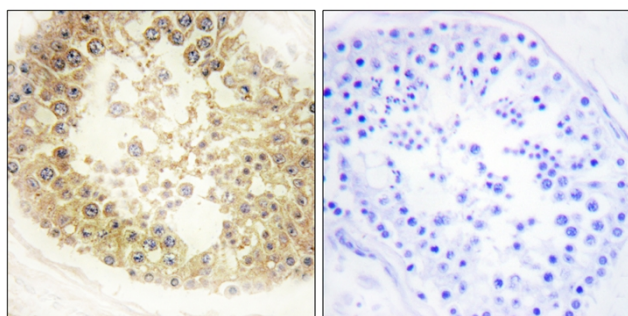
Catalog No	YP-Ab-01679
Isotype	IgG
Reactivity	Human;Mouse
Applications	IHC;IF;ELISA
Gene Name	C2orf40
Protein Name	Augurin
Immunogen	The antiserum was produced against synthesized peptide derived from human ECRG4. AA range:41-90
Specificity	ECRG4 Polyclonal Antibody detects endogenous levels of ECRG4 protein.
Formulation	Liquid in PBS containing 50% glycerol, 0.5% BSA and 0.02% sodium azide.
Source	Polyclonal, Rabbit,IgG
Purification	The antibody was affinity-purified from rabbit antiserum by affinity-chromatography using epitope-specific immunogen.
Dilution	Immunohistochemistry: 1/100 - 1/300. Immunofluorescence: 1/200 - 1/1000. ELISA: 1/20000. Not yet tested in other applications.
Concentration	1 mg/ml
Purity	≥90%
Storage Stability	-20°C/1 year
Synonyms	C2orf40; ECRG4; Augurin; Esophageal cancer-related gene 4 protein
Observed Band	
Cell Pathway	Secreted . Cytoplasm . Apical cell membrane .
Tissue Specificity	Expressed in the brain, with expression in the epithelial cell layer of the choroid plexus (at protein level).
Function	function:Probable hormone.,similarity:Belongs to the augurin family.,
Background	function:Probable hormone.,similarity:Belongs to the augurin family.,
matters needing attention	Avoid repeated freezing and thawing!
Usage suggestions	This product can be used in immunological reaction related experiments. For more information, please consult technical personnel.



Products Images



Immunofluorescence analysis of A549 cells, using ECRG4 Antibody. The picture on the right is blocked with the synthesized peptide.



Immunohistochemistry analysis of paraffin-embedded human testis tissue, using ECRG4 Antibody. The picture on the right is blocked with the synthesized peptide.