

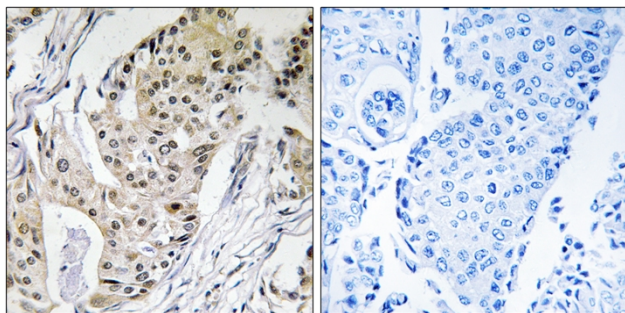


# DNA pol ε 4 Polyclonal Antibody

<b>Catalog No</b>	YP-Ab-01659
<b>Isotype</b>	IgG
<b>Reactivity</b>	Human;Mouse
<b>Applications</b>	IHC;IF;ELISA
<b>Gene Name</b>	POLE4
<b>Protein Name</b>	DNA polymerase epsilon subunit 4
<b>Immunogen</b>	The antiserum was produced against synthesized peptide derived from human POLE4. AA range:61-110
<b>Specificity</b>	DNA pol ε 4 Polyclonal Antibody detects endogenous levels of DNA pol ε 4 protein.
<b>Formulation</b>	Liquid in PBS containing 50% glycerol, 0.5% BSA and 0.02% sodium azide.
<b>Source</b>	Polyclonal, Rabbit,IgG
<b>Purification</b>	The antibody was affinity-purified from rabbit antiserum by affinity-chromatography using epitope-specific immunogen.
<b>Dilution</b>	IHC: 1/100 - 1/300. ELISA: 1/40000.. IF 1:50-200
<b>Concentration</b>	1 mg/ml
<b>Purity</b>	≥90%
<b>Storage Stability</b>	-20°C/1 year
<b>Synonyms</b>	POLE4; DNA polymerase epsilon subunit 4; DNA polymerase II subunit 4; DNA polymerase epsilon subunit p12
<b>Observed Band</b>	12kD
<b>Cell Pathway</b>	Nucleus .
<b>Tissue Specificity</b>	Cervix carcinoma,Skin,
<b>Function</b>	catalytic activity:Deoxynucleoside triphosphate + DNA(n) = diphosphate + DNA(n+1).,function:May play a role in allowing polymerase epsilon to carry out its replication and/or repair function.,PTM:Phosphorylated upon DNA damage, probably by ATM or ATR.,subunit:Consists of four subunits: POLE1, POLE2, POLE3 and POLE4. Interacts with POLE3. When bound to POLE3, it can associate with polymerase epsilon p261 and p59 and form a complex.,
<b>Background</b>	POLE4 is a histone-fold protein that interacts with other histone-fold proteins to bind DNA in a sequence-independent manner. These histone-fold protein dimers combine within larger enzymatic complexes for DNA transcription, replication, and packaging.[supplied by OMIM, Apr 2004],
<b>matters needing attention</b>	Avoid repeated freezing and thawing!

**Usage suggestions**

This product can be used in immunological reaction related experiments. For more information, please consult technical personnel.

**Products Images**

Immunohistochemistry analysis of paraffin-embedded human breast carcinoma tissue, using POLE4 Antibody. The picture on the right is blocked with the synthesized peptide.