



DNA pol α Polyclonal Antibody

Catalog No	YP-Ab-01654
Isotype	IgG
Reactivity	Human;Rat;Mouse;
Applications	WB;ELISA
Gene Name	POLA1
Protein Name	DNA polymerase alpha catalytic subunit
Immunogen	The antiserum was produced against synthesized peptide derived from human DNA Polymerase alpha. AA range:81-130
Specificity	DNA pol α Polyclonal Antibody detects endogenous levels of DNA pol α protein.
Formulation	Liquid in PBS containing 50% glycerol, 0.5% BSA and 0.02% sodium azide.
Source	Polyclonal, Rabbit,IgG
Purification	The antibody was affinity-purified from rabbit antiserum by affinity-chromatography using epitope-specific immunogen.
Dilution	Western Blot: 1/500 - 1/2000. ELISA: 1/20000. Not yet tested in other applications.
Concentration	1 mg/ml
Purity	$\geq 90\%$
Storage Stability	-20°C/1 year
Synonyms	POLA1; POLA; DNA polymerase alpha catalytic subunit; DNA polymerase alpha catalytic subunit p180
Observed Band	165kD
Cell Pathway	Nucleus . Cytoplasm, cytosol . In the cytosol, colocalizes with RNA:DNA hybrids with a speckled pattern. .
Tissue Specificity	
Function	catalytic activity:Deoxynucleoside triphosphate + DNA(n) = diphosphate + DNA(n+1).,function:Polymerase alpha in a complex with DNA primase is a replicative polymerase.,miscellaneous:In eukaryotes there are five DNA polymerases: alpha, beta, gamma, delta, and epsilon which are responsible for different reactions of DNA synthesis.,PTM:A 165 kDa form is probably produced by proteolytic cleavage at Lys-124.,similarity:Belongs to the DNA polymerase type-B family.,subunit:Interacts with SV40 Large T antigen; this interaction allows viral DNA replication.,
Background	This gene encodes the catalytic subunit of DNA polymerase, which together with a regulatory and two primase subunits, forms the DNA polymerase alpha complex. The catalytic subunit plays an essential role in the initiation of DNA replication. [provided by RefSeq, Mar 2010],



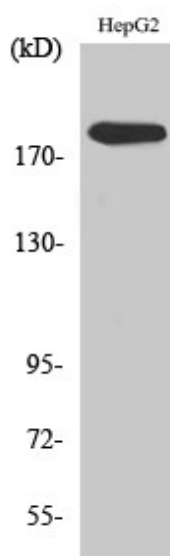
matters needing attention

Avoid repeated freezing and thawing!

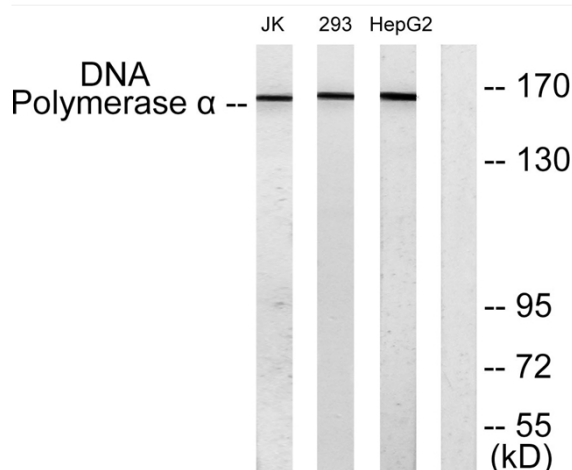
Usage suggestions

This product can be used in immunological reaction related experiments. For more information, please consult technical personnel.

Products Images



Western Blot analysis of various cells using DNA pol α Polyclonal Antibody diluted at 1:1000



Western blot analysis of lysates from HepG2, 293, and Jurkat cells, using DNA Polymerase alpha Antibody. The lane on the right is blocked with the synthesized peptide.