



CSB Polyclonal Antibody

Catalog No	YP-Ab-01629
Isotype	IgG
Reactivity	Human;Rat;Mouse;
Applications	IHC;IF;ELISA
Gene Name	ERCC6
Protein Name	DNA excision repair protein ERCC-6
Immunogen	The antiserum was produced against synthesized peptide derived from human ERCC6. AA range:141-190
Specificity	CSB Polyclonal Antibody detects endogenous levels of CSB protein.
Formulation	Liquid in PBS containing 50% glycerol, 0.5% BSA and 0.02% sodium azide.
Source	Polyclonal, Rabbit,IgG
Purification	The antibody was affinity-purified from rabbit antiserum by affinity-chromatography using epitope-specific immunogen.
Dilution	IHC: 1/100 - 1/300. ELISA: 1/40000.. IF 1:50-200
Concentration	1 mg/ml
Purity	≥90%
Storage Stability	-20°C/1 year
Synonyms	ERCC6; CSB; DNA excision repair protein ERCC-6; ATP-dependent helicase ERCC6; Cockayne syndrome protein CSB
Observed Band	
Cell Pathway	Nucleus .
Tissue Specificity	Brain,Epithelium,
Function	disease:Defects in ERCC6 are a cause of De Sanctis-Cacchione syndrome (DSC) [MIM:278800]; also known as xerodermic idiocy. DSC is an autosomal recessive syndrome consisting of xeroderma pigmentosum associated with mental retardation, retarded growth, gonadal hypoplasia and sometimes neurologic complications.,disease:Defects in ERCC6 are a cause of UV-sensitive syndrome (UVS) [MIM:600630]. UVS is a rare autosomal recessive disorder characterized by photosensitivity and mild freckling but without neurological abnormalities or skin tumors.,disease:Defects in ERCC6 are the cause of cerebro-oculo-facio-skeletal syndrome type 1 (COFS1) [MIM:214150]; also known as COFS syndrome or Pena-Shokeir syndrome type 2. COFS is a degenerative autosomal recessive disorder of prenatal onset affecting the brain, eye and spinal cord. After birth, it leads to brain atrophy, hypoplasia of the corpus callosum,



Background

This gene encodes a DNA-binding protein that is important in transcription-coupled excision repair. The encoded protein has ATP-stimulated ATPase activity, interacts with several transcription and excision repair proteins, and may promote complex formation at DNA repair sites. Mutations in this gene are associated with Cockayne syndrome type B and cerebrooculofacioskeletal syndrome 1. Alternative splicing occurs between a splice site from exon 5 of this gene to the 3' splice site upstream of the open reading frame (ORF) of the adjacent gene, piggyback-derived-3 (GeneID:267004), which activates the alternative polyadenylation site downstream of the piggyback-derived-3 ORF. The resulting transcripts encode a fusion protein that shares sequence with the product of each individual gene. [provided by RefSeq, Mar 2016],

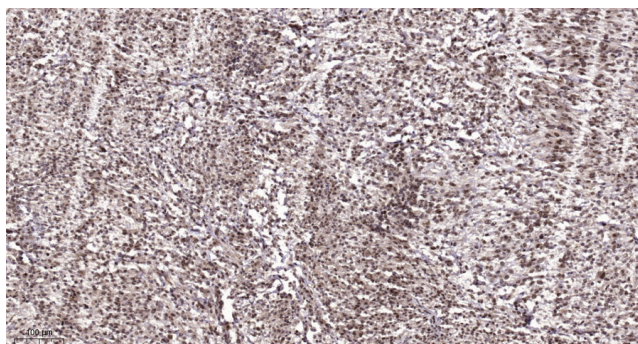
matters needing attention

Avoid repeated freezing and thawing!

Usage suggestions

This product can be used in immunological reaction related experiments. For more information, please consult technical personnel.

Products Images



Immunohistochemical analysis of paraffin-embedded human Colon cancer. 1, Antibody was diluted at 1:200(4° overnight). 2, Tris-EDTA,pH9.0 was used for antigen retrieval. 3,Secondary antibody was diluted at 1:200(room temperature, 45min).