



CHRAC15 Polyclonal Antibody

Catalog No	YP-Ab-01610
Isotype	IgG
Reactivity	Human;Mouse
Applications	IHC;IF;ELISA
Gene Name	CHRAC1
Protein Name	Chromatin accessibility complex protein 1
Immunogen	The antiserum was produced against synthesized peptide derived from human CHRC1. AA range:81-130
Specificity	CHRAC15 Polyclonal Antibody detects endogenous levels of CHRAC15 protein.
Formulation	Liquid in PBS containing 50% glycerol, 0.5% BSA and 0.02% sodium azide.
Source	Polyclonal, Rabbit,IgG
Purification	The antibody was affinity-purified from rabbit antiserum by affinity-chromatography using epitope-specific immunogen.
Dilution	IHC: 1/100 - 1/300. ELISA: 1/5000.. IF 1:50-200
Concentration	1 mg/ml
Purity	≥90%
Storage Stability	-20°C/1 year
Synonyms	CHRAC1; CHRAC15; Chromatin accessibility complex protein 1; CHRAC-1; Chromatin accessibility complex 15 kDa protein; CHRAC-15; HuCHRAC15; DNA polymerase epsilon subunit p15
Observed Band	
Cell Pathway	Nucleus .
Tissue Specificity	Expressed in heart, brain, placenta, lung, liver, skeletal muscle, kidney and pancreas.
Function	function:Forms a complex with DNA polymerase epsilon subunit POLE3 and binds naked DNA, which is then incorporated into chromatin, aided by the nucleosome remodeling activity of ISWI/SNF2H and ACF1.,subunit:Interacts with POLE3. Together with POLE3, ACF1 and ISWI/SNF2H proteins, it forms the ISWI chromatin-remodeling complex, CHRAC.,tissue specificity:Expressed in all tissues tested, including, heart, brain, placenta, lung, liver, skeletal muscle, kidney and pancreas.,
Background	CHRAC1 is a histone-fold protein that interacts with other histone-fold proteins to bind DNA in a sequence-independent manner. These histone-fold protein dimers combine within larger enzymatic complexes for DNA transcription, replication, and packaging.[supplied by OMIM, Apr 2004],

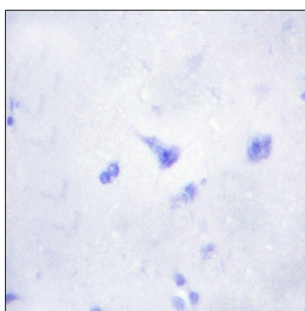
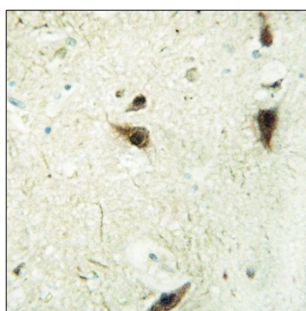
matters needing attention

Avoid repeated freezing and thawing!

Usage suggestions

This product can be used in immunological reaction related experiments. For more information, please consult technical personnel.

Products Images



Immunohistochemistry analysis of paraffin-embedded human brain tissue, using CHRC1 Antibody. The picture on the right is blocked with the synthesized peptide.