

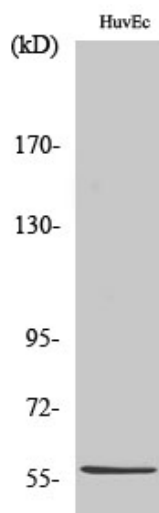


# CCDC4 Polyclonal Antibody

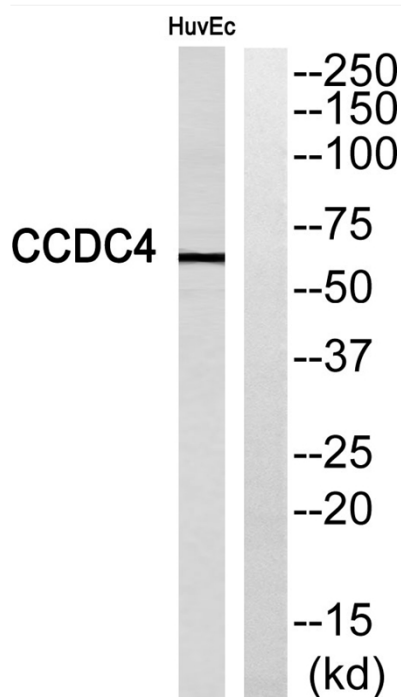
<b>Catalog No</b>	YP-Ab-01597
<b>Isotype</b>	IgG
<b>Reactivity</b>	Human;Rat;Mouse;
<b>Applications</b>	WB;ELISA
<b>Gene Name</b>	BEND4
<b>Protein Name</b>	BEN domain-containing protein 4
<b>Immunogen</b>	The antiserum was produced against synthesized peptide derived from human BEND4. AA range:371-420
<b>Specificity</b>	CCDC4 Polyclonal Antibody detects endogenous levels of CCDC4 protein.
<b>Formulation</b>	Liquid in PBS containing 50% glycerol, 0.5% BSA and 0.02% sodium azide.
<b>Source</b>	Polyclonal, Rabbit,IgG
<b>Purification</b>	The antibody was affinity-purified from rabbit antiserum by affinity-chromatography using epitope-specific immunogen.
<b>Dilution</b>	Western Blot: 1/500 - 1/2000. ELISA: 1/40000. Not yet tested in other applications.
<b>Concentration</b>	1 mg/ml
<b>Purity</b>	≥90%
<b>Storage Stability</b>	-20°C/1 year
<b>Synonyms</b>	BEND4; CCDC4; BEN domain-containing protein 4; Coiled-coil domain-containing protein 4
<b>Observed Band</b>	57kD
<b>Cell Pathway</b>	
<b>Tissue Specificity</b>	Prostatic carcinoma,Testis,
<b>Function</b>	PTM:Phosphorylated upon DNA damage, probably by ATM or ATR.,similarity:Contains 1 BEN domain.,
<b>Background</b>	PTM:Phosphorylated upon DNA damage, probably by ATM or ATR.,similarity:Contains 1 BEN domain.,
<b>matters needing attention</b>	Avoid repeated freezing and thawing!
<b>Usage suggestions</b>	This product can be used in immunological reaction related experiments. For more information, please consult technical personnel.



## Products Images



Western Blot analysis of various cells using CCDC4 Polyclonal Antibody



Western blot analysis of BEND4 Antibody. The lane on the right is blocked with the BEND4 peptide.