



# CBX2 Polyclonal Antibody

|                           |  |
|---------------------------|--|
| <b>Catalog No</b>         | YP-Ab-01592  |
| <b>Isotype</b>            | IgG  |
| <b>Reactivity</b>         | Human;Mouse  |
| <b>Applications</b>       | IHC;IF;ELISA   |
| <b>Gene Name</b>          | CBX2   |
| <b>Protein Name</b>       | Chromobox protein homolog 2  |
| <b>Immunogen</b>          | Synthesized peptide derived from the N-terminal region of human CBX2.  |
| <b>Specificity</b>        | CBX2 Polyclonal Antibody detects endogenous levels of CBX2 protein.  |
| <b>Formulation</b>        | Liquid in PBS containing 50% glycerol, 0.5% BSA and 0.02% sodium azide.  |
| <b>Source</b>             | Polyclonal, Rabbit,IgG   |
| <b>Purification</b>       | The antibody was affinity-purified from rabbit antiserum by affinity-chromatography using epitope-specific immunogen.  |
| <b>Dilution</b>           | IHC: 1/100 - 1/300. ELISA: 1/40000.. IF 1:50-200   |
| <b>Concentration</b>      | 1 mg/ml  |
| <b>Purity</b>             | ≥90%   |
| <b>Storage Stability</b>  | -20°C/1 year   |
| <b>Synonyms</b>           | CBX2; Chromobox protein homolog 2  |
| <b>Observed Band</b>      |  |
| <b>Cell Pathway</b>       | Nucleus . Chromosome . Localized in distinct foci on chromatin and in chromocenters. Localizes to the inactive X chromosome. Seems to be recruited to H3K27me3, H3K9ac and H3K3me2 sites on chromatin. .   |
| <b>Tissue Specificity</b> | Peripheral blood,Uterus,   |
| <b>Function</b>           | function:Component of the Polycomb group (PcG) multiprotein PRC1 complex, a complex required to maintain the transcriptionally repressive state of many genes, including Hox genes, throughout development. PcG PRC1 complex acts via chromatin remodeling and modification of histones; it mediates monoubiquitination of histone H2A 'Lys-119', rendering chromatin heritably changed in its expressibility.,similarity:Contains 1 A.T hook DNA-binding domain.,similarity:Contains 1 chromo domain.,subunit:Component of chromatin-associated class II polycomb repressive complex 1 (PRC1/hPRC-H) at least composed of PCGF2/RNF110, BMI1/PCGF4, CBX2/M33, CBX4/PC2, CBX8/PC3, PHC1, PHC2, PHC3, SCMH1, RING1 and RNF2/RING2., |
| <b>Background</b>         | This gene encodes a component of the polycomb multiprotein complex, which is required to maintain the transcriptionally repressive state of many genes throughout development via chromatin remodeling and modification of histones. Disruption of this gene in mice results in male-to-female gonadal sex reversal.   |



Mutations in this gene are also associated with gonadal dysgenesis in humans. Alternatively spliced transcript variants encoding different isoforms have been noted for this gene.[provided by RefSeq, Mar 2010],

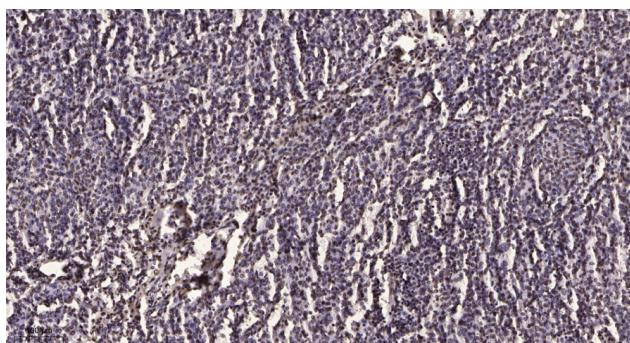
#### matters needing attention

Avoid repeated freezing and thawing!

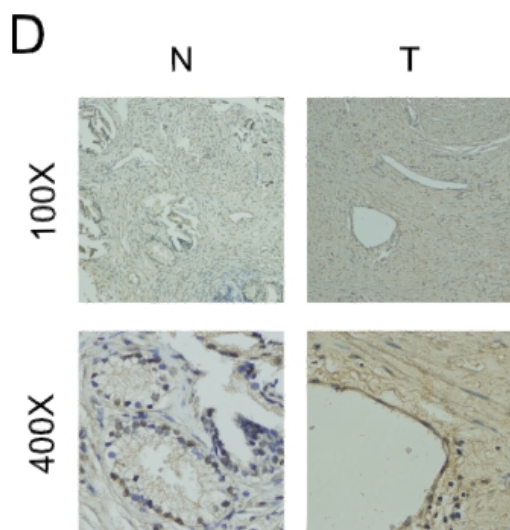
#### Usage suggestions

This product can be used in immunological reaction related experiments. For more information, please consult technical personnel.

### Products Images



Immunohistochemical analysis of paraffin-embedded human brain tumor. 1, Antibody was diluted at 1:200(4° overnight). 2, Tris-EDTA,pH9.0 was used for antigen retrieval. 3,Secondary antibody was diluted at 1:200(room temperature, 45min).



A Liquid&dash;Liquid Phase Separation-Related Index Associate with Biochemical Recurrence and Tumor Immune Environment of Prostate Cancer Patients INTERNATIONAL JOURNAL OF MOLECULAR SCIENCES Qi You, Jia-Yin Chen, Xiao-Hui Wu, Yu-Ting Xue, Jiang-Bo Sun, Yong Wei, Qing-Shui Zheng, Xue-Yi Xue, Dong-Ning Chen, Ning Xu IHC Human benign prostatic hyperplasia (BPH) tissue prostate cancer (PCa)cell